

Year 2030 + is resolved to 1930's instead

07/07/2025 1:06 pm EDT

Reference cases 00136837 / 00136388

When setting future-dated items it may be possible for the user to select the correct date, but then the system reflects a date in the 1900s instead. Development confirmed this is a per-user setting on every workstation/server that may be defaulted to 1929 or earlier. Below are the steps to resolve with a Registry edit or manually.

****User MUST have admin privileges on their machine/profile to resolve. If they do not, they must engage with their IT to fix.****

*****Hosted customers should be resolved but anyone in support can assist with either option as needed.*****

Merge Registry Option

Download [TwoDignityMax2050.reg](#) or create a txt file with the following information and save it as a .reg file

Windows Registry Editor Version 5.00

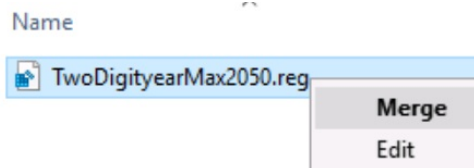
```
[HKEY_CURRENT_USER\Control Panel\International\Calendars\TwoDigitYearMax]
```

```
"1"="2050"  
"2"="2050"  
"9"="2050"  
"10"="2050"  
"11"="2050"  
"12"="2050"
```

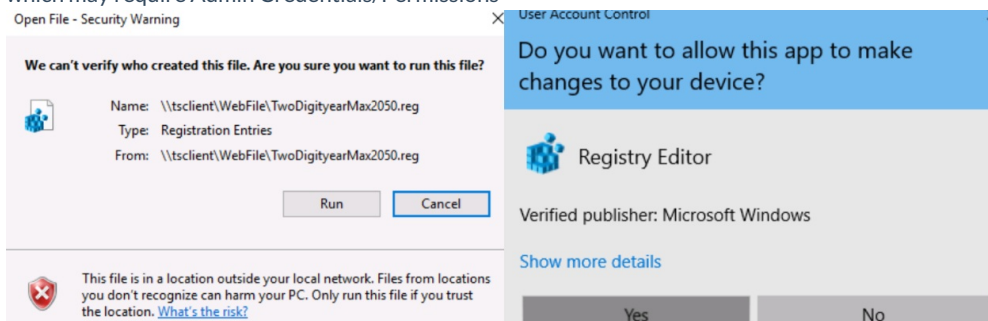
```
[HKEY_CURRENT_USER\Control Panel\International\Calendars\TwoDigitYearMax\en-US]
```

```
"1"=dword:00002049
```

1. Right click on the file and select Merge






2. You may receive a Security Warning Prompt in which case you may proceed to select Run and the following prompt will be UAC which may require Admin Credentials/Permissions



3. Select Yes to finally confirm the registry changes and you should receive a confirmation



The alternative method is to Manually set the Two Digit Calendar Year

1. Either Select Run and Type intl.cpl

2. Or - Navigate to Control Panel > Date and Time > Change Date and time > Change calendar settings

3. Select the Date Tab > Modify the year in the 2nd column under Calendar to a date 10+ years in the future

4. Return and set the date and year in the desired application area, then confirm it is showing properly.

