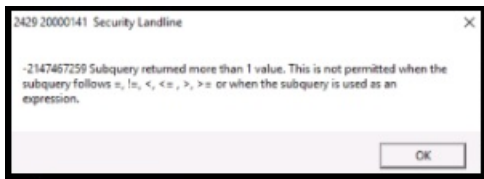


# Subquery Error

01/09/2025 9:10 am EST



When you encounter the Subquery error, the system is indicating that there is a duplicate value. When the system runs a query, it is expecting 1 return value. If it receives two or more values, then it cannot choose between them and returns this message. Subquery errors can sometimes be resolved from the front end by looking into frequent duplicates, such as zip codes and customer numbers.

---