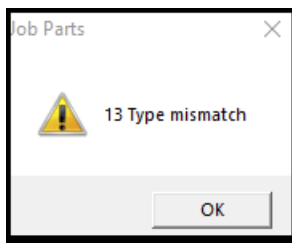


Type 13 Mismatch Error

01/09/2025 9:08 am EST



When you encounter the Type 13 Mismatch error, it indicates that there is a special character or something else in the data field that the system cannot read. This could also indicate that the referenced ID in SQL is invalid. Type 13s can sometimes be corrected from the front end if the invalid character is visible in a part description, but otherwise will require correction from Data.
