

How to Make Hierarchy Changes in Phoenix Data Entry

08/15/2024 10:36 am EDT

The Hierarchy Change Tool can make data changes easier to rename, copy, or delete multiple hierarchy records at the same time.

For example: Need to change a Transmitter ID use this command to change all records in the database that contain that ID.

This feature can also be used as a template.

For example: Can set up a generic transmitter with common data for a dealer and use Copy to create specific transmitters under the same Dealer and then change the other data as needed.

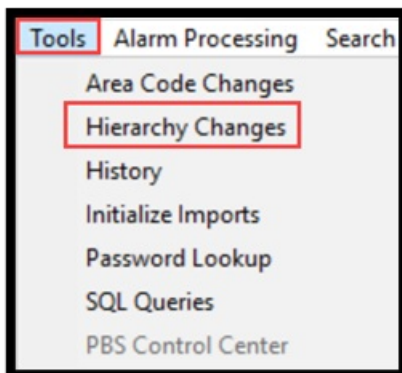
Overview

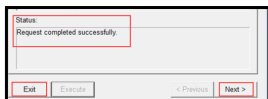
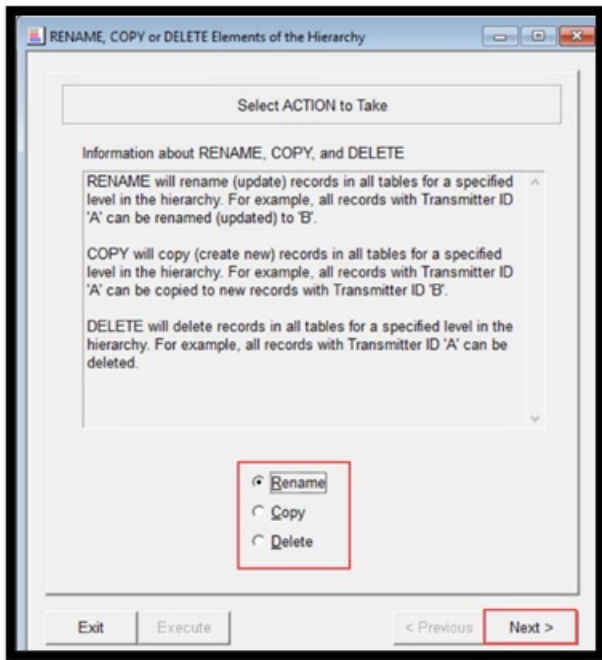
The steps below assume the user doing the steps has the correct permissions to complete them.

- *It is recommended to back up your data prior to making any kind of changes to the data using this tool.*

Steps:

Open The Hierarchy Change Tool by clicking on Tools – Hierarchy Changes from the dropdown menu. There are three options that can be used: Rename, Copy and Delete.





1. Rename

Will rename (update) records in all tables for a specified level in the hierarchy. *For example, all records with Transmitter ID 'A' can be renamed (updated) to 'B'.*

1. Select Rename from the main window and click on the Next button.
2. Define the hierarchy records in the left column by either typing the correct values or enter the Transmitter ID of an existing record. When moving/tabbing to the next field or option, Phoenix will fill in the values for the higher-level hierarchy fields.

RENAME, COPY or DELETE Elements of the Hierarchy

Specify EXISTING Hierarchy to Rename Specify NEW Hierarchy to Rename to

Dealer: _____

Organization: _____

Subscriber: _____

Site: _____

Transmitter: **RF7190**

Clear Clear

Up One Level

Exit Execute < Previous Next >

3. Redefine Levels by using the Up One Level button to redefine the level as needed.
4. Enter the New Hierarchy Fields with the appropriate values in the New Hierarchy Fields column and click Next once completed

RENAME, COPY or DELETE Elements of the Hierarchy

Specify EXISTING Hierarchy to Rename Specify NEW Hierarchy to Rename to

Dealer: **UP ADEHCO LYNN** **LC**

Organization: **-1** **Main Campus**

Subscriber: **COMMERCIAL** **Campus PD**

Site: **4424 LOVERS** **Science Lab 520**

Transmitter: **RF7190** **LC7190**

Clear Clear

Up One Level

Exit Execute < Previous **Next >**

5. Choose the appropriate table(s) that need to be changed or check the ALL tables check box to rename all tables in list.
6. Click on either the **Do NOT** rename Signal History or the Rename Signal History radio button.

RENAME, COPY or DELETE Elements of the Hierarchy

RENAME records in which Tables ?

ALL tables

Transmitter
Zone
Contact Link
False Alarm History
MessageLink
Sigcontrol

Do what with Signal history ?

Do NOT rename Signal history

Rename Signal history
Warning! Renaming signal history may slow down signal processing for a few minutes.

Exit Execute < Previous **Next >**

7. Once all selected - Click Next

8. In the Summary window, review the settings, and click Execute to make the changes in the database.

Summary of selected Action, Hierarchy, and Tables.
Click on EXECUTE to take action.

Action: RENAME

	Existing Hierarchy:	New Hierarchy:
Dealer	UP ADEMCO LYNX	LC
Organization	-1	Main Campus
Subscriber	COMMERCIAL	Campus PD
Site	4424 LOVERS	Science Lab 520
Transmitter	RF7190	LC7190

Tables: All tables

Transmitter	MessageLink
Zone	Sigcontrol
Contact Link	
False Alarm History	

Status:

Exit Execute < Previous Next >

1. Once the Status area shows "Request completed successfully", Click on either the Exit button if done or the Next button if there is another hierarchy change needed.

Status:
Request completed successfully.

Exit Execute < Previous Next >

2. Copy

Will copy (create new) records in all tables for a specified level in the hierarchy. For example, all records with Transmitter ID 'A' can be copied to new records with Transmitter ID 'B'.

- The copy function works the same as the Rename steps above. However, if the transmitter is being moved into a new hierarchy structure, that structure must be in the database.

Example: Transmitter A will be Copied as Transmitter B and the Site ID will also change. The new site id must also be in the database as well. So, if the Site does not exist, that site will need to be added prior to copying the transmitter(s) into that new site via Data Manager.

RENAME, COPY or DELETE Elements of the Hierarchy

	Specify EXISTING Hierarchy to Rename	Specify NEW Hierarchy to Rename to
Dealer	UP ADEMCO LYNX	LC
Organization	-1	Main Campus
Subscriber	COMMERCIAL	Campus PD
Site	4424 LOUERS	Science Lab 520
Transmitter	RF7190	LC7190

Clear Clear

Up One Level

Exit Execute < Previous Next >

Data Manager

Dealer	LC, LC
Organization	Main Campus, Main Campus
Subscriber	Campus PD, Campus PD
Site	
Transmitter	←
Zone	

Clear Save Restore

Site ID	Site Name

Refresh Open New

1. Delete

Will delete records in all tables for a specified level in the hierarchy. For example, all records with Transmitter ID 'A' can be deleted.

1. Select Delete from the main window and click next.
2. Define the Records for deletion by typing the correct values or the Transmitter ID.

Once you exit the transmitter field, Phoenix auto-fills the higher levels. Use the Up One Level button to redefine as needed.

RENAME, COPY or DELETE Elements of the Hierarchy

Specify EXISTING Hierarchy to Delete

Dealer: UP ADENCO LYNK

Organization: -1

Subscriber: COMMERCIAL

Site: 4424 LOVERS

Transmitter: RF 719

Clear Clear

Up One Level

Exit Execute < Previous Next >

3. Choose the Table(s) that are wanted to be deleted or check the ALL tables check box. Click on either **Do NOT** delete Signal History or the Delete Signal History radio button - Click Next

RENAME, COPY or DELETE Elements of the Hierarchy

DELETE records in which Tables ?

ALL tables, including Transmitter

Only the SELECTED tables

Zone
Contact Link
False Alarm History
MessageLink
Sigcontrol

NOTE
If a Transmitter record is deleted, all records containing that Transmitter ID in related tables will also be deleted, for example, records in the Contact Link table

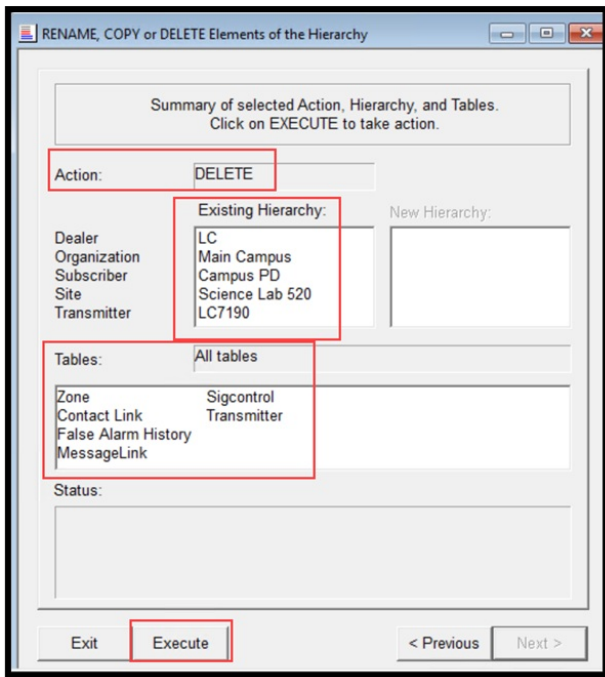
Do what with Signal history ?

Do NOT delete Signal history

Delete Signal history
Warning! Deleting signal history may slow down signal processing for a few minutes.

Exit Execute < Previous Next >

4. Summary Window will open and can review the settings and what tables will be deleted. Once verified – click on Execute to make the changes to the database.



5. Once the Status area shows "Request completed successfully", Click on either the Exit button if done or the Next button if there is another hierarchy change needed.

