

NotifyMe (2.0) - Initial Setup and Configuration

05/13/2024 6:26 pm EDT

Integration Gateway

Bold NotifyMe requires the Integration Gateway service. This document will not cover installing Integration Gateway itself as that product supports more than just this one integration. For the rest of this document, it is assumed that the Integration Gateway has been properly installed and configured into the Manitou system.

Configuration of the Integration Gateway specific to Bold NotifyMe consists only of setting the driver in the *IntegrationGateway.exe.config* file located in the Manitou directory on the server. The following line must be present under the drivers section.

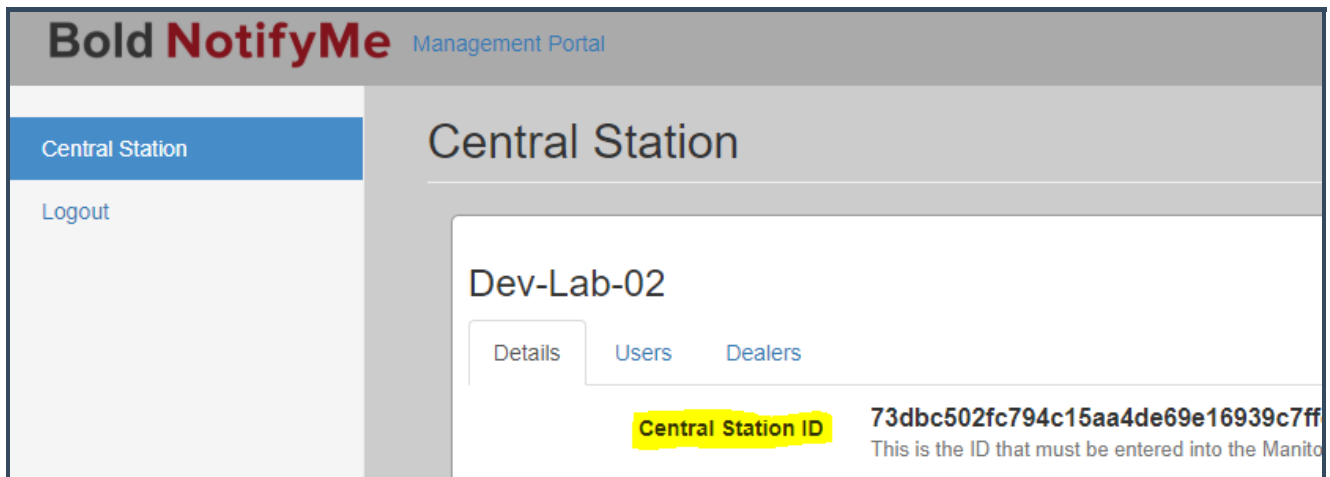
```
<add name="BoldNotifier" driverType="BoldNotifier" version="1"/>
```

Supervisor Workstation Configuration

There are several things that must be configured in Supervisor Workstation. Two of these require the central station to have been setup in the Bold NotifyMe portal.

Bold NotifyMe Connection Info

The Central Station ID (CSID) is provided through the Bold NotifyMe portal. It is created by Bold when a new Central is setup in the portal. It can be seen on the main Central Station tab on login.



Bold NotifyMe Management Portal

Central Station

Logout

Central Station

Dev-Lab-02

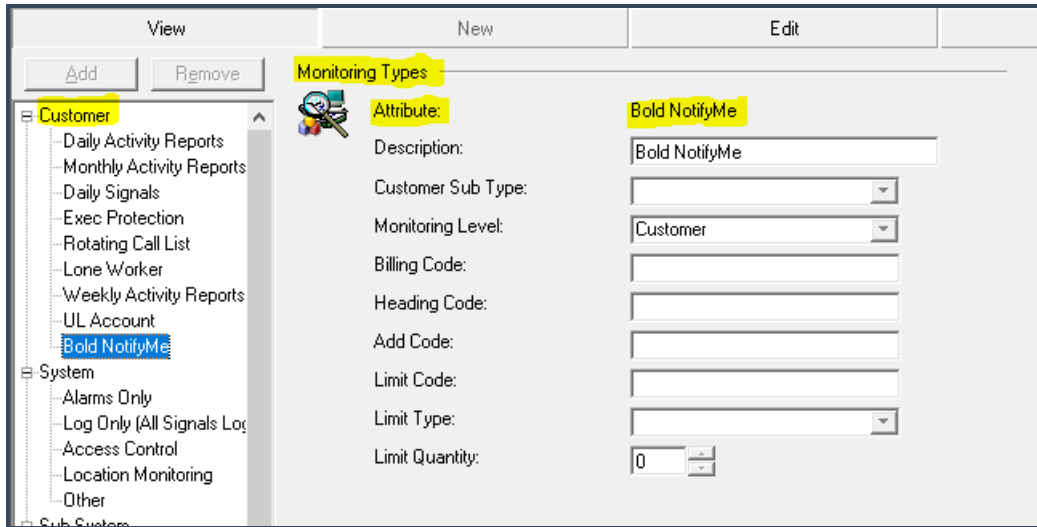
Details Users Dealers

Central Station ID 73dbc502fc794c15aa4de69e16939c7ff
This is the ID that must be entered into the Manitou system.

This entire GUID must be copied into a CSID field in Supervisor Workstation field later in the setup process.

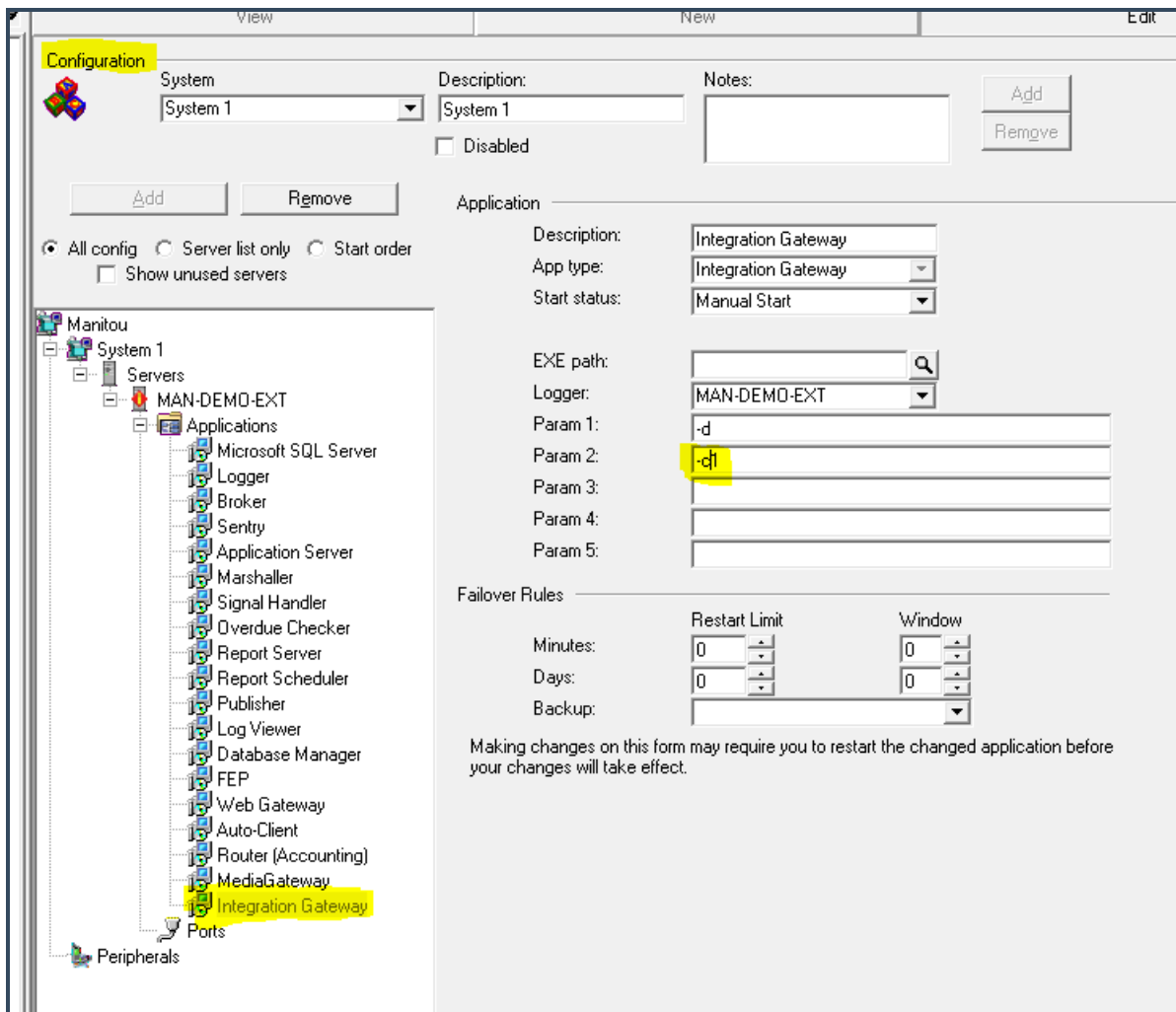
Monitoring Service Setup

A Bold NotifyMe monitoring service must be defined so that it can be added at the account level. This is done in the Supervisor Workstation under *Maintenance > Setup > Monitoring Types*. It must be at the Customer Level and have the Bold NotifyMe attribute.



Setting Configuration

The integration gateway needs to know what NotifyMe configuration to use. This is specified in SWS under *Maintenance > Setup > Configuration* options. Adding a -c parameter with the NotifyMe configuration number is required. We typically add a new NotifyMe configuration (1) so that NotifyMe configuration 0 can be used as a reference.



Setting Integration Gateway Configuration

To start we make a new Bold NotifyMe configuration by going to *Maintenance > Setup > Integration Configuration* and going into edit mode.

Select the 0 - BOLDNOTIFER and copy out the configuration settings text. This will be used below.

Under *Integration Gateway Configurations* Add a new Configuration Type as shown below.

Configuration Type

Configuration Type

- Integration Gateway Configuration
- Module Properties
- Module Function Codes
- Module Status Bits
- Video HTML Pages
- Audio HTML Pages
- Mapping HTML Pages

SubType

1

Driver Name

BOLDNOTIFIER

Description

Bold NotifyMe

OK Cancel

The Driver Name must be BOLDNOTIFIER in all caps!

Say Ok and paste in the template configuration as the Configuration settings.

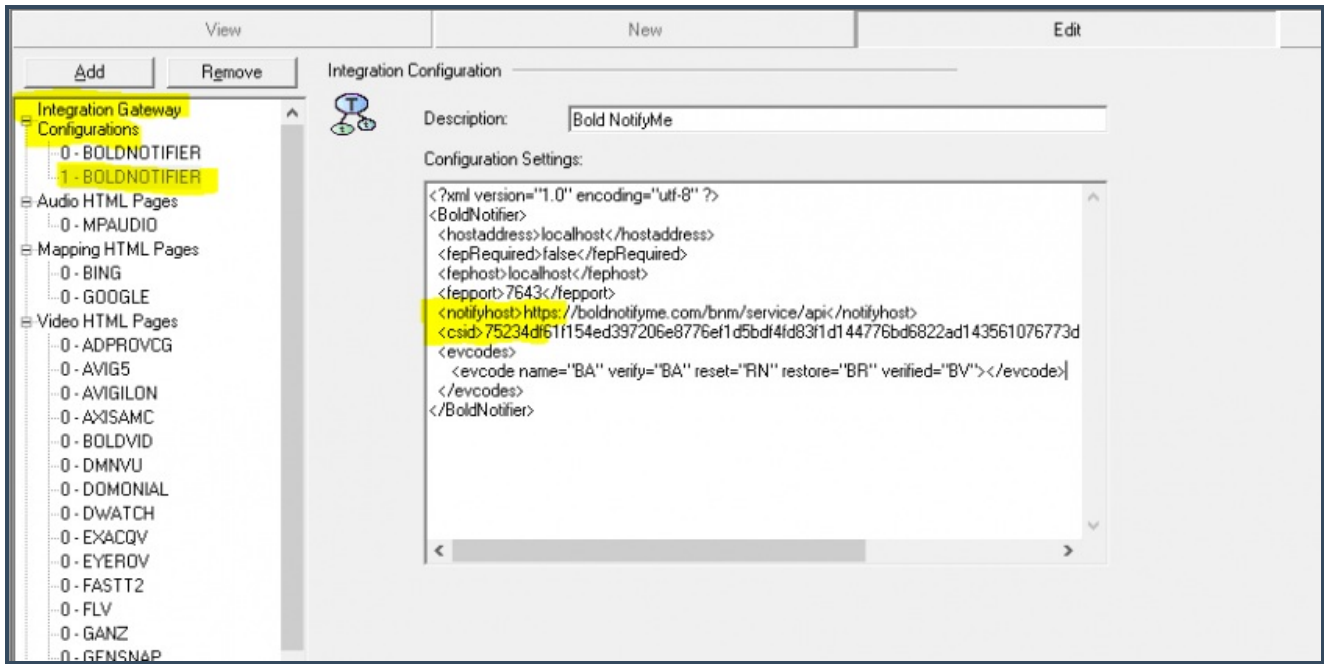
Adjust the hostaddress, fep settings, as needed.

The production path for Bold NotifyMe should be as follows: <https://boldnotifyme.com/bnm/service/api>

Update the CSID with the value provided in the NotifyMe portal.

Configure the event codes that should be used with NotifyMe.

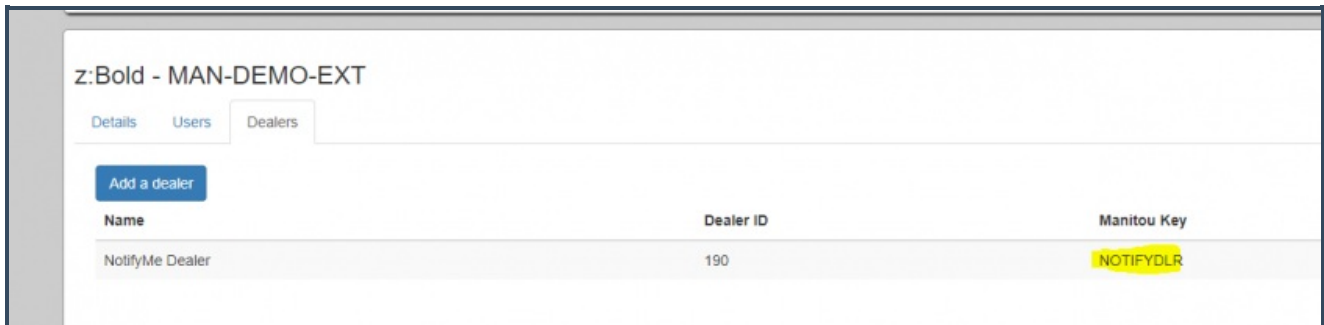
Internal signals like Late-to's do not work in Manitou 2.0 with NotifyMe.



Save this configuration.

Dealer Configuration

Each Dealer must be configured in the Bold NotifyMe Portal. This is done by navigation to the Dealer tab under the Central Station. Here you will find a list of existing dealers. A dealer only needs to be added once. The most important part is the Manitou Key which provides the proper linkage. This must be set to the Dealer ID as found in Manitou.



Dealer information is not automatically synchronized to the NotifyMe Server. It must be done Manually through the Bold NotifyMe portal before accounts under that dealer have the Monitoring Service added!

Operator Workstation Configuration

This section is focused on the basic setup required to get NotifyMe to a working state except for applying programming. Programming will be covered in a separate section entirely.

Account Configuration

Users in NotifyMe are Contacts in the Contact List in Manitou. The contact must have a Contact Point Type of Push Notification. This can be the same phone number as another Contact Point. This is the phone number that is used to register in the App.

Type	Phone Number	Extension	Script	Schedule	Private
Mobile	(555) 555-4321		Script	No Schedule	<input type="checkbox"/>
Push Notification	(555) 555-4321		Script	No Schedule	<input type="checkbox"/>

The password used to register in the App is the Password for that Contact in Manitou.

Field	Value
Password	ABCD
OpenVoice ID	
Web Access ID	0
Web Profile	None

Additionally, a monitoring service must be added to each account that is to be used in Bold NotifyMe. This must be added at the Customer level on the Customer's account under *Monitoring Services*.

Add Monitoring Service

Monitoring Type: [Dropdown] All

Description	Billing Code
Exec Protection	
Lone Worker	
Bold NotifyMe	

In Manitou 2.0 this is not present in MNEO. It must be added through OWS.

When the monitoring service is added to the account, the details of the account and contact list will be synchronized with the NotifyMe server. This is used during the end user registration process as well as presented in the Mobile App. Changes on the account will also be synchronized as long as the monitoring service is present.

Once the monitoring service has been added, verify that the account exists in that dealer.

The screenshot shows a web interface titled "Dealer". At the top left, there is a yellow highlight on the text "NotifyMe Dealer". Below this, there are three tabs: "Details", "Users", and "Customers", with "Customers" being the active tab. A table is displayed below the tabs with the following data:

Name	Manitou Key	Phone
NotifyMe Customer	NOTIFYME	5555551234