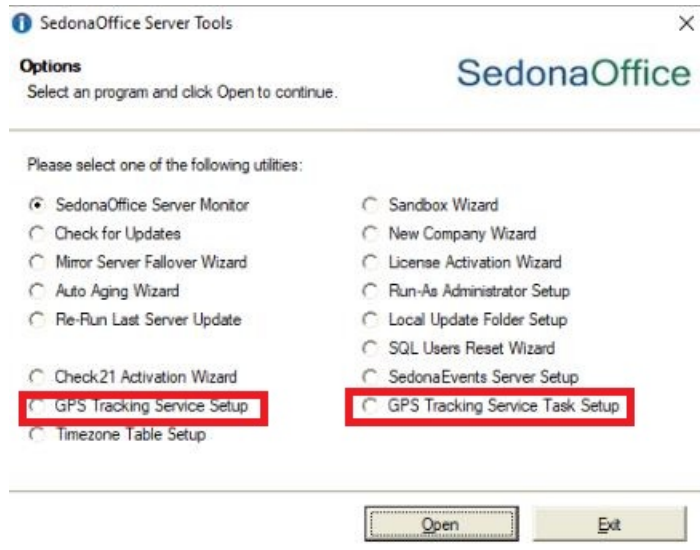


# VerizonConnect (Fleetmatics/SageQuest) Setup

09/19/2025 9:18 am EDT

Run the 2 GPS tracking utilities from Server Utilities.



[Needs a q in ss setup modules](#)

SQL Script

```
UPDATE SY_Sagequest_Setup SET Work_Order_Url = 'https://rev-  
int.api.us.fleetmatics.com/WorkOrder/SageQuest/WorkOrderService.svc',Routing_Url = 'https://rev-  
int.api.us.fleetmatics.com/Routing/SageQuest/RoutingService.svc',Customer_Url = 'https://rev-  
int.api.us.fleetmatics.com/Customer/SageQuest/CustomerService.svc',Driver_Url = 'https://rev-  
int.api.us.fleetmatics.com/Driver/SageQuest/DriverService.svc',Vehicle_Url = 'https://rev-  
int.api.us.fleetmatics.com/Vehicle/SageQuest/VehicleService.svc'
```

Once fleetmatics button is available in service, put in credentials.

---