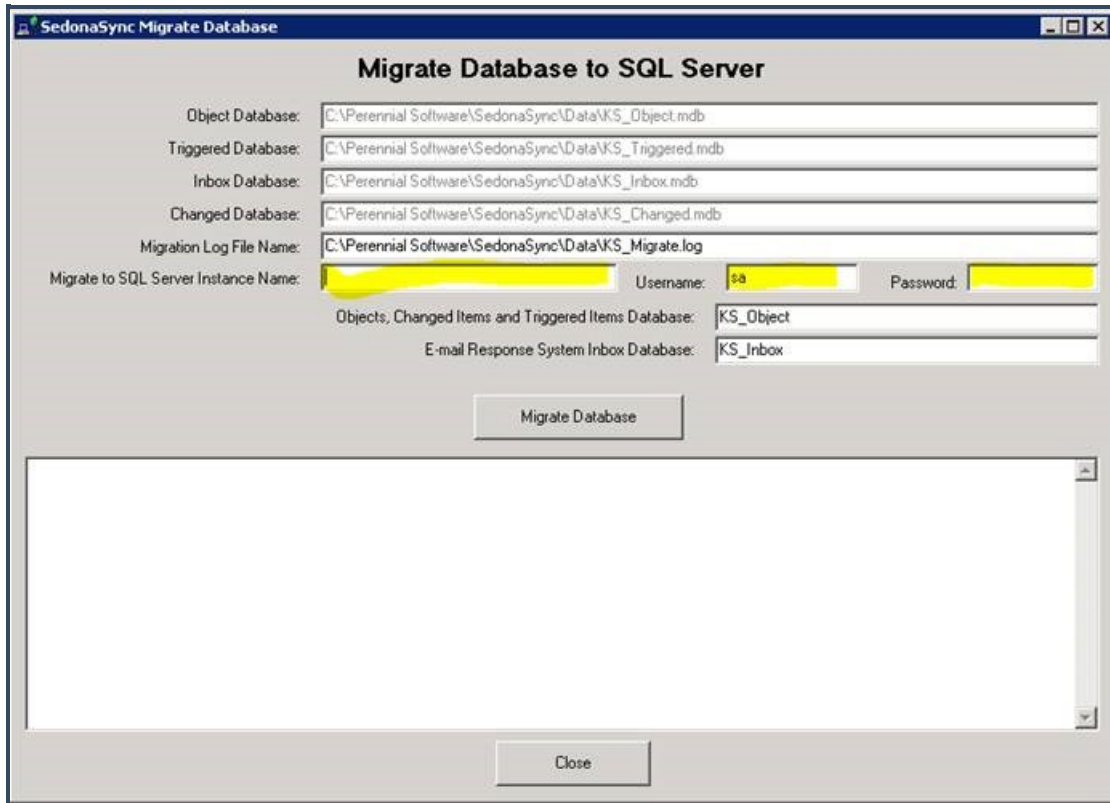


# Sync to SQL

02/12/2024 3:32 pm EST

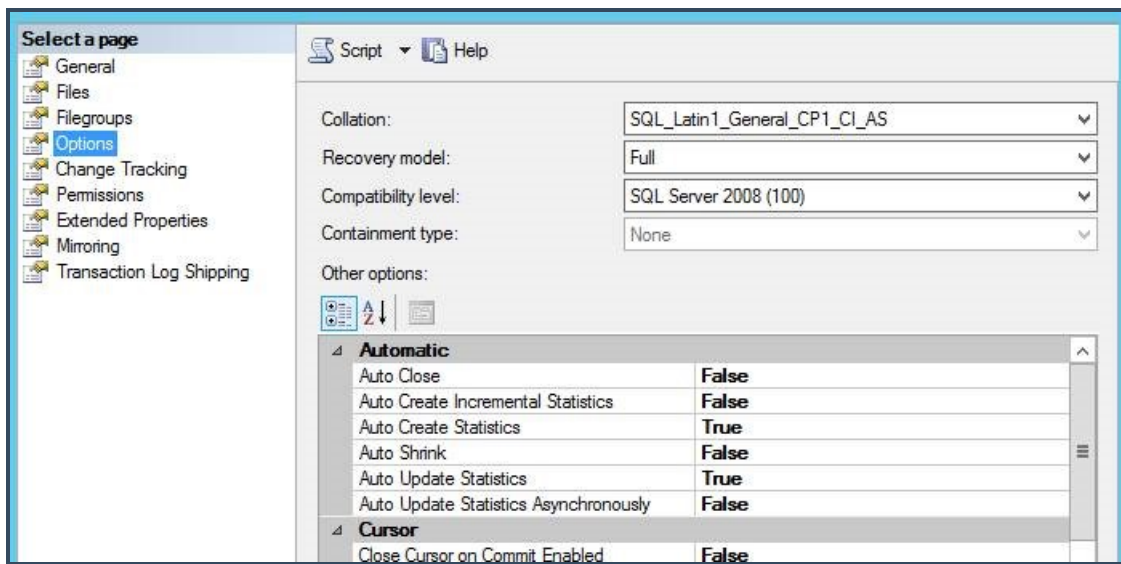
The SedonaSync Migrate to SQL utility is fairly straightforward.

To start, locate the utility under **Start > All Programs > SedonaOffice > SedonaSync > Migrate DB to SQL**.



The utility just needs the SQL server name and an SQL login with at least DBcreator rights. Once you enter this information and click the Migrate button, Sync will move its data from its Access databases to two SQL databases: KS\_Inbox and KS\_Object. Note: SedonaSync still needs the Access database files to exist to run properly even though it will not use them after migrating to SQL.

By default, it puts the SQL databases in full recovery mode, so it's recommended you change them to simple recovery mode unless you're comfortable with SQL and can monitor the transaction log size. To change the recovery mode of the databases, open SQL Server Management Studio, expand Databases, right-click on the database and select Properties. In the Database properties, click on Options, and then use the drop-down menu to change the Recovery Model to Simple:



If you're not comfortable with this process, I can move SedonaSync to SQL for you. I will just need a LiveAssist on your SedonaSync and SQL servers.