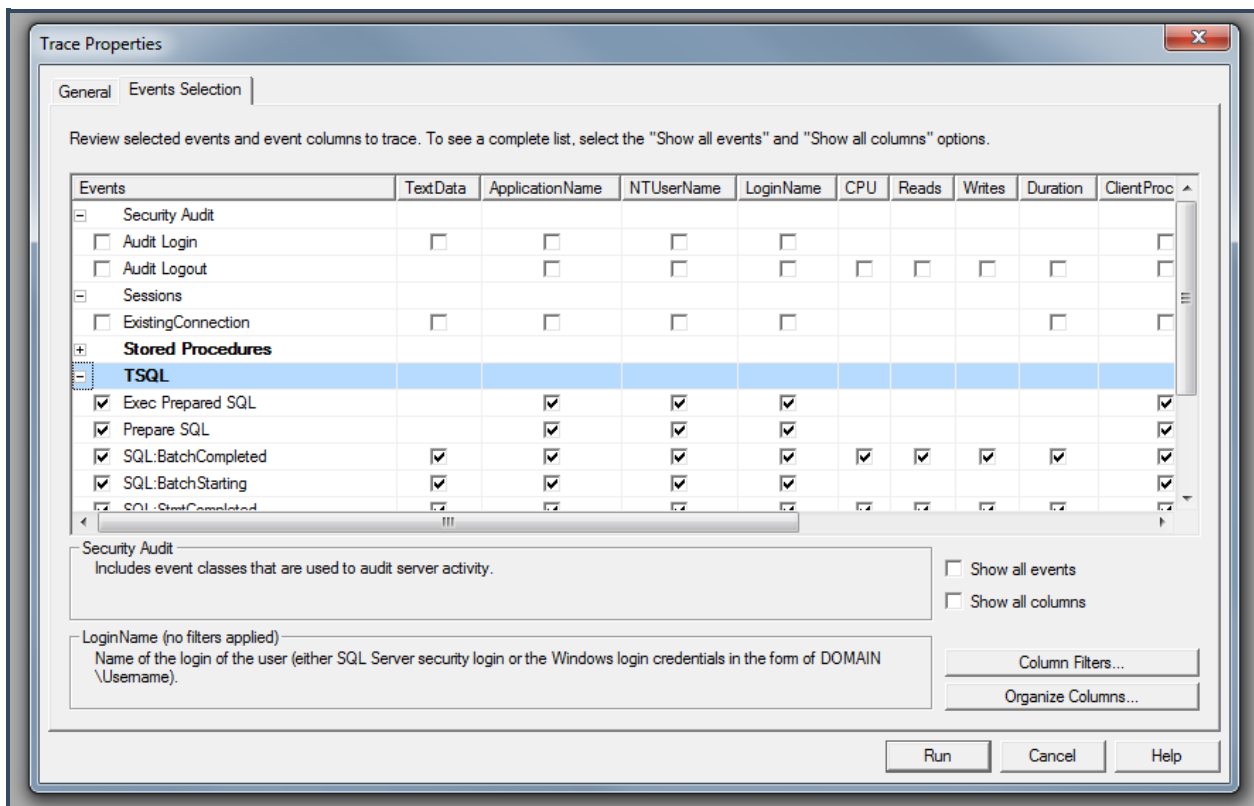


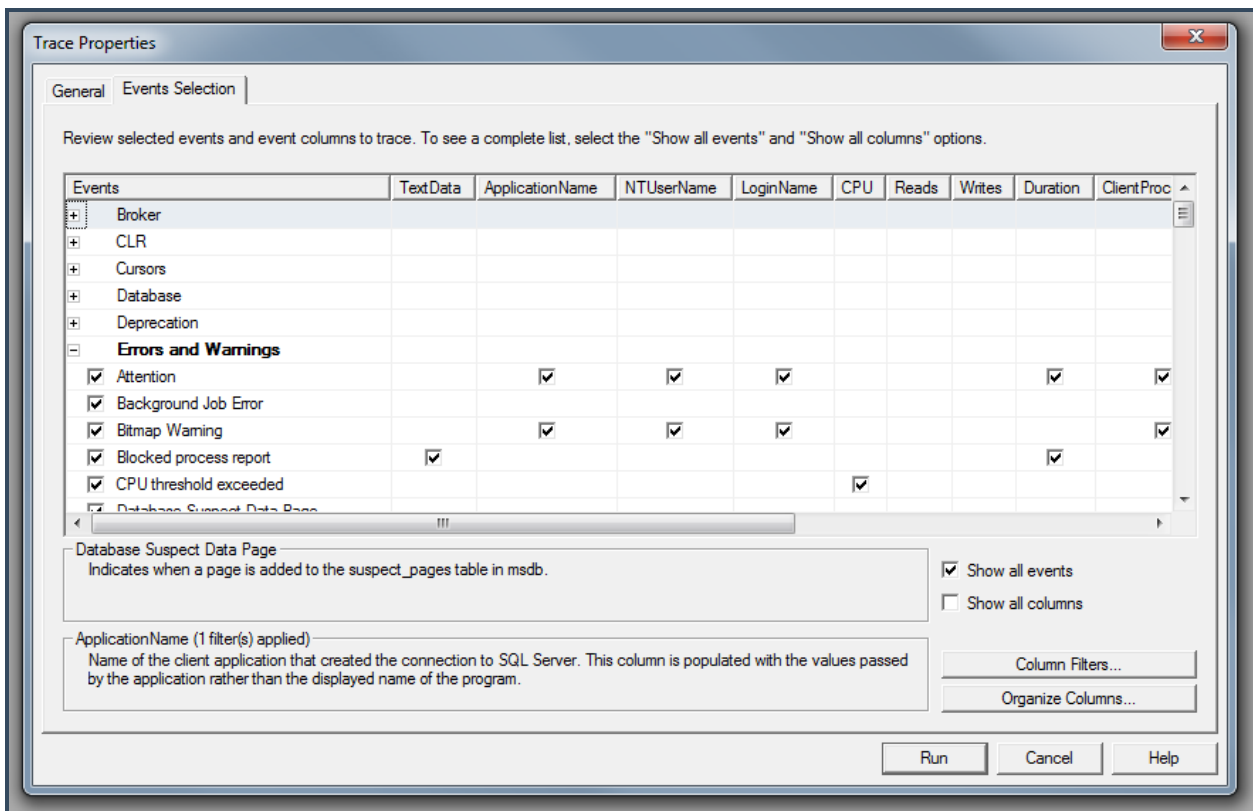
# SQL Profiler

02/12/2024 3:05 pm EST

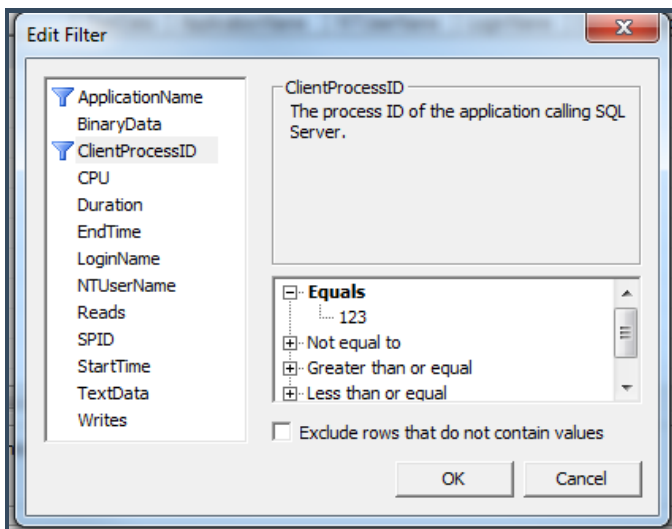
- Open SQL Server Profiler, which can be opened from SQL Server Management Studio, Tools-> SQL Server Profiler
- Connect to SQL Server that is hosting SedonaOffice.
- Go to the Events Selection tab:



- Right-Click Security Audit -> Deselect Event Category
- Right-Click Sessions -> Deselect Event Category
- Right-click Stored Procedures -> Select Event Category
- Right-click TSQL -> Select Event Category
- Click the Show All Events Checkbox:



- Right-click Errors and Warnings -> Select Event Category
- Click the Column Filters... Button.
- In the Edit Filter Window, click ClientProcessID, Expand Equals, and enter the PID for SedonaOffice for the user seeing the error:



- Click OK.
- Click Run.
- Go to SedonaOffice and replicate the error if possible.

In the trace, find the last query or stored proc that tried to run before a red error/attention message. This is the information we need to look into the error. In this example, I just used the PID for SQL Server Management Studio and

local dummy databases instead of SedonaOffice to avoid meddling with the registry to point my Sedona client to my local machine instead of our server. But the message we'd be looking for above the error in this example is "select \* from Example\_Table":

SP:CacheInsert	select * from Example_Table	Microsoft SQ...	Jeff	Jeff-P...						4472	58	2017-02-0...
SQL:BatchStarting	select * from Example_Table	Microsoft SQ...	Jeff	Jeff-P...						4472	58	2017-02-0...
SQL:StmtStarting	select * from Example_Table	Microsoft SQ...	Jeff	Jeff-P...						4472	58	2017-02-0...
SQL:StmtRecompile	select * from Example_Table	Microsoft SQ...	Jeff	Jeff-P...						4472	58	2017-02-0...
Exception	Invalid object name 'Example_Table'.	Microsoft SQ...	Jeff	Jeff-P...						4472	58	2017-02-0...
User Error Message	Invalid object name 'Example_Table'.	Microsoft SQ...	Jeff	Jeff-P...						4472	58	2017-02-0...
SQL:BatchCompleted	select * from Example_Table	Microsoft SQ...	Jeff	Jeff-P...	0	4	0	10		4472	58	2017-02-0...

Sometimes the last several messages before the error will be something like "--encrypted text--", in this case we need the last thing that ran before those messages.

If you click on a row in the Profiler, you should be able to get the full query or stored proc that tried to run for that row and can copy and paste it. You could also provide screenshots as long as the full query/stored proc fits in the row or details box:

The screenshot shows the SQL Server Profiler interface. The top pane displays a list of events, with the 'Exception' and 'User Error Message' rows selected. The 'User Error Message' row contains the text 'Invalid object name 'Example\_Table''. Below this, the 'Details' pane shows the full query text: 'select \* from Example\_Table'. The bottom status bar indicates 'Ready.', 'Rows: 1', and 'Connections: 1'.