

RSI Videofied- Installation and Configuration

12/22/2023 10:50 am EST

Information needed before an RSI Installation can proceed:

- IP Address of RSI Server
- Intended Receiver Line Prefix
- Intended Receiver Number
- Does the customer have their RSI equipment yet? Log on to the RSI server at the customer site.

Begin downloading from:

Connect to the Manitou server

Make sure they are licensed for video

Make sure the most recent Binary Objects have been imported

Get most recent BObject_Files folder from the distributor folder, place it in the Manitou folder, go into the folder, and run the Import_All.bat file. (it may be necessary to restart the broker to get the video types to show up)

Open the Supervisor Workstation

Go to the Receivers screen

Create a new Receiver Line Prefix based on the answer to the question at the beginning of this document, then save.

Leave Supervisor Workstation open, but minimize it.

Open the Manitou Operator Workstation

Create a new Transmitter Type for RSI, making sure to set the Reverse Cmd Protocol as RSI

Frontel GI, and make sure to mark the box for Video Capable, and make sure the dropdown has RSI Videofied Video selected.

□

Create a Default Account for RSI Videos using the new RLP and TXTYPE

Go back to the Supervisor Workstation

Create a Reverse Route similar to the picture

□

On the receiver screen, add an RSI receiver to each FEP configuration, specifying TCP (in), The IP of the RSI Server, TCP Port 7645(this is an arbitrary number, as we will specify it later in the RSI setup, but it is a good idea to try to do most of them the same), the new RLP as the default, and the new default account as the Default Designation for unknown signals.

□

Your new receiver should now show up in the FEP Commander as 'TCP Listen'

□

At this point the Manitou portion of this configuration is complete.

RSI Server

You can now return to the RSI server and continue the installation from there. By now the file you downloaded should be

finished. Unzip this file. The Zip Password is 'videofied' (without the quotes) Run the Setup.exe file

Specify the language (usually English). Click OK Click Next

Specify a Serial Number of 'SERVER' (without the quotes, case sensitive) and click next

□

Click Next on the 'Select Destination Location' screen Click Next on the 'Database' screen

Click Next on the 'Select Start Menu Folder' screen Click Install

A FrontelConfig window will pop up. Click on the Services Tab

□

On the Services tab, click the install button next to: ComCenter, ComServ, Log, and GI

□

Click on the Monitoring Tab. Click on 'Disable Monitoring'

□

Click on the GI tab. Specify the IPs of the FEP machine(s) in the host blanks, and type 7645 in the blank for the Port on BOTH blanks. Change the number of Retries to 3. Click Apply! If you don't click Apply, this won't save.

□

Click on the Email tab. If you have it available, enter server and login information here. If you add anything CLICK APPLY!

□

Click on the SLog tab. Uncheck all of the boxes EXCEPT the first in the 'Error' box and the first in the 'Warning' box.

□

Click on the Scripting tab. Make sure the 'Full' radio button is checked. **CLICK APPLY!**

□

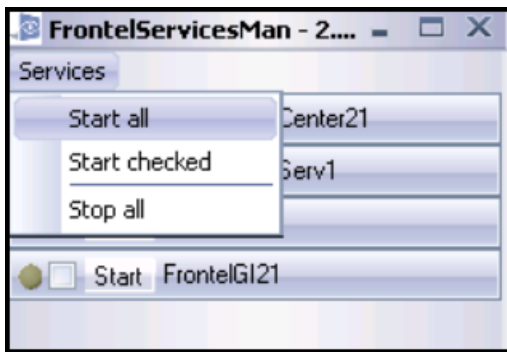
Click on the Licensing tab. Copy the HWFP number into an email and send it to Brian Beale (BBeale@videofied.com) with the details about the site.

□

Exit out of the FrontelConfig Program by using the 'X' in the upper right corner. You will be returned to the installer screen. Uncheck the box for 'Run Alarm Server' and click Finish

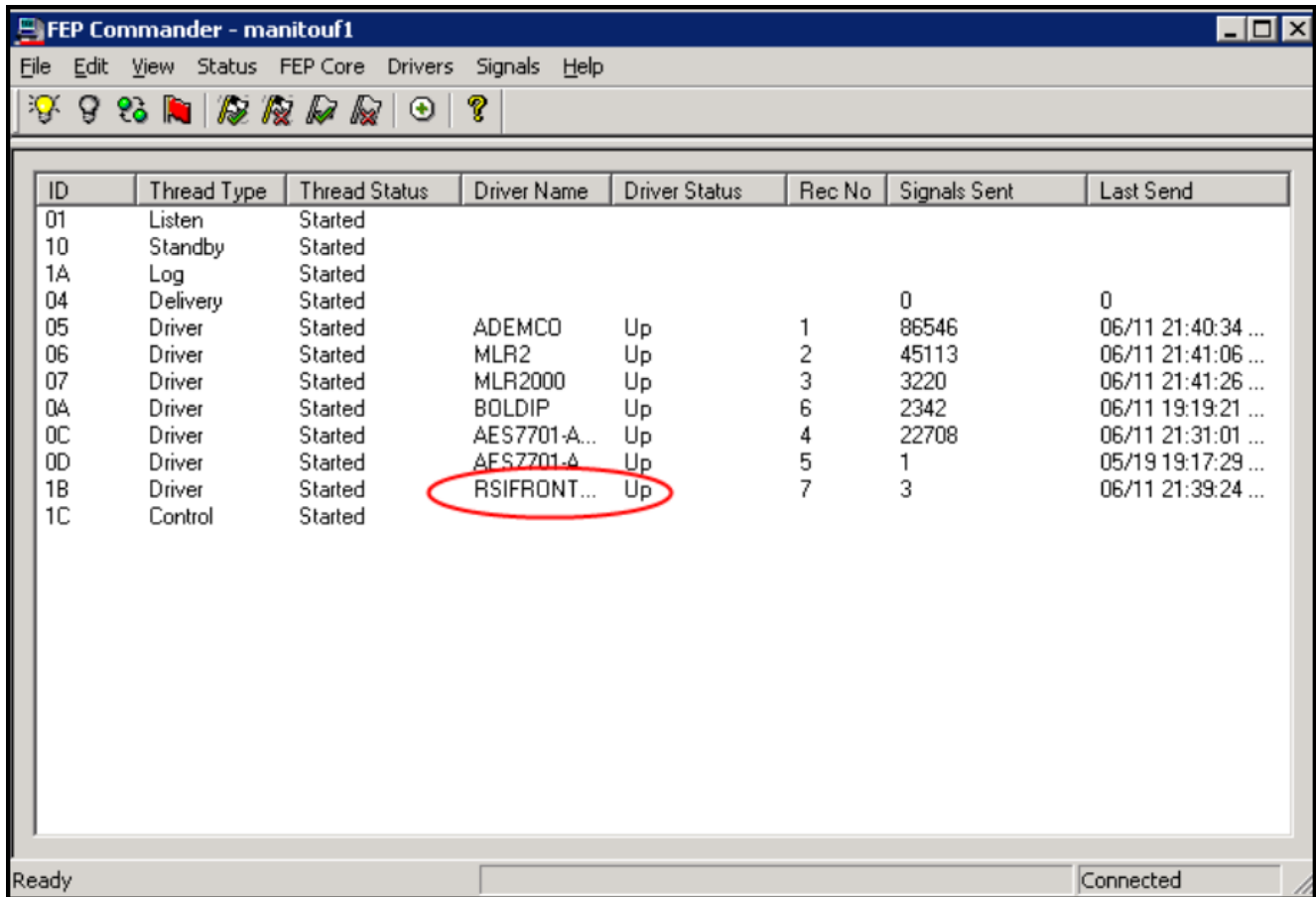
□

The FrontelLauncher will come up. Click on the ServicesMan icon.



When started, all the services will appear with a yellow light. At this point the installation of the RSI server is complete.

Return to the Manitou Server, and view the FEP Commander. It should show the status of the RSI receiver as 'Up'



You can now notify the customer, and they can begin their testing with Videofied.