

SedonaOffice WeSuite Integrations

07/03/2024 9:05 am EDT

Here, you will find all of the current information about WeSuite and how it integrates with SedonaOffice.

Below is the main section to get everything set up from a development perspective. For non-development information regarding WeSuite, see the following files for more information:

[Part 01 - Brief Overview.docx](#)

[Part 02 - Project Essentials.docx](#)

[Part 03 - Creating your first project.docx](#)

[Part 04 - Rolling up items.docx](#)

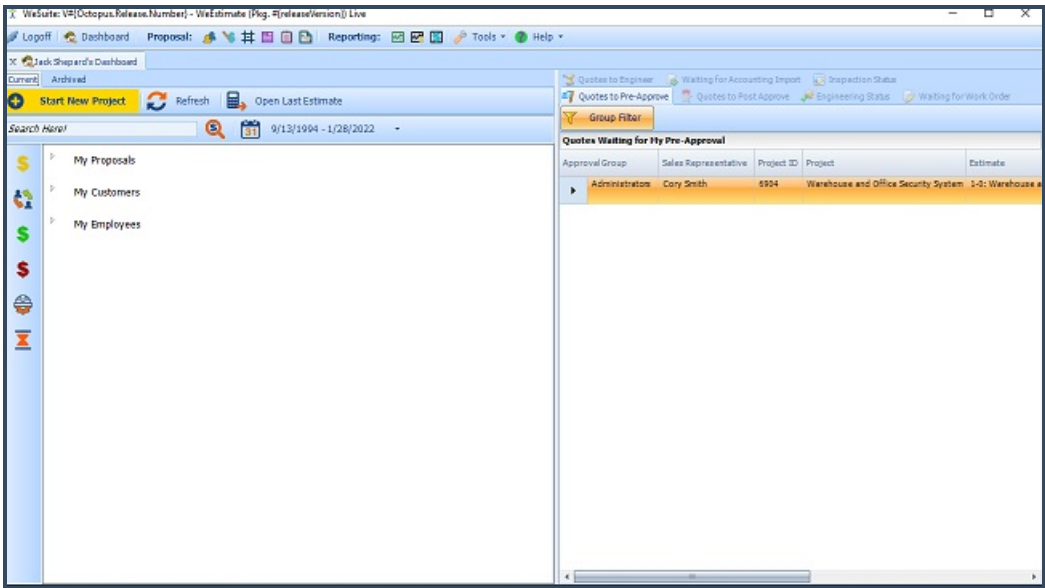
[Part 05 - Importing into SedonaOffice.docx](#)

Part 1: Initial setup

1. You will need to install Crystal Reports Runtime before using WeSuite. These can be downloaded from Oracle's Crystal Reports section (NOTE: You will need an Oracle account to download. The runtimes are free). You will need to install both of the following;
 - CR13SP30MSI32_0-10010309.MSI
 - CR13SP30MSI64_0-10010309.MSI
2. You will also need either the demo WeSuite database or a blank WeSuite database. Reach out to michael.fazio@wesuite.com to get a copy of the blank database.
NOTE: The database being used in the QA/Test environment is a Demo Database for WeSuite.
3. You will need to copy the WeSuite folder from the location that gets updated to whichever environment. Unfortunately, all of these files are too large to upload.
4. Basic steps to get WeSuite running:
 - a. Install both runtimes for Crystal (mentioned above).
 - b. Copy the WeSuite folder, and run the application for the first time. This will error out, and a "config" folder is created.
 - c. Open the config folder, and edit the file called "WsUser.config". Fill in the below keys:

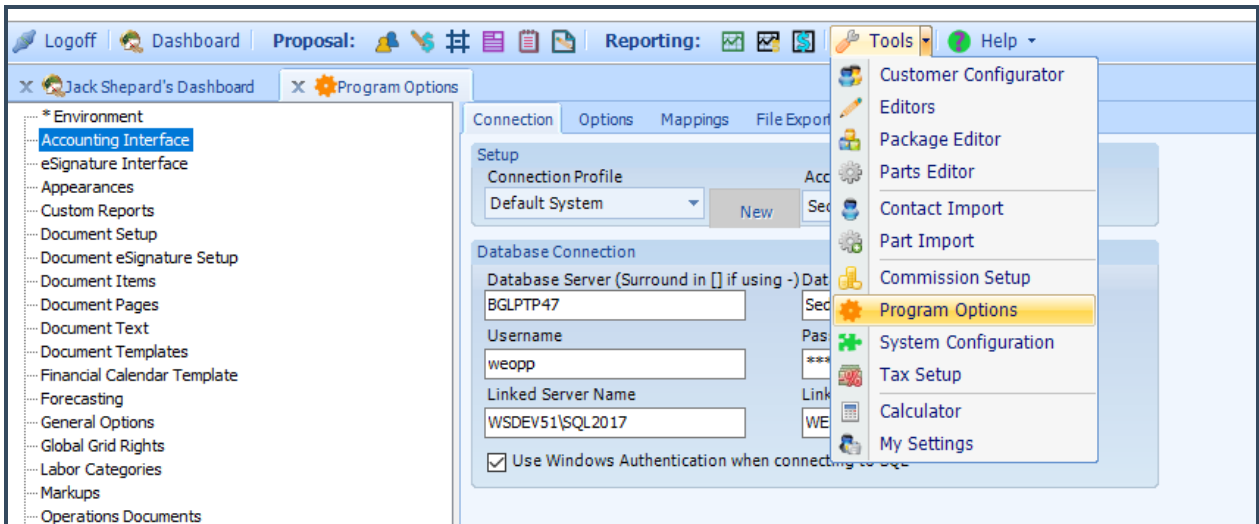
```
WsUser.config x fmAR_Customer_Site.fm x JobDataService.cs x JobNotes.cls x fmAR_Cu
1 <?xml version="1.0" encoding="utf-8" ?>
2 <configuration>
3   <appSettings>
4     <add key="dbuseauthentication" value="False" /> <!--Set to
5     <!--<add key="dbserver" value="SEDONAL" />-->
6     <add key="dbserver" value="SERVER HERE" />
7     <add key="dbuid" value="USER HERE" />
8     <add key="dbpassword" value="PASSWORD HERE" />
9     <add key="dbname" value="WESUITE DATABASE HERE" />
10    <!--<add key="dbname" value="Contracts" />-->
11    <add key="environmentname" value="#{EnvironmentName}" />
12  </appSettings>
13
14 </configuration>
```

d. If you fill in the settings (NOTE: Assuming the database backup was restored prior), You should be greeted with the following screen after logging in:



Part 2: Common settings in WeSuite Database/Front-End

1. Once inside WeSuite, go to the following location: [Tools] => [Program Options] => [Accounting Interface].



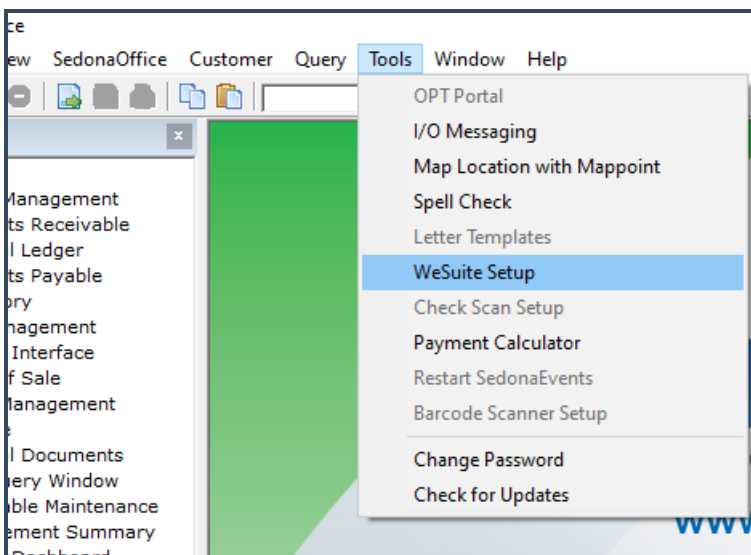
2. Fill out the [Database Server] and [Database Name] - This information will be for your SedonaOffice database instance.

Part 3: Common issues with WeSuite

[no content]

Part 4: SedonaOffice WeSuite Integration Setup

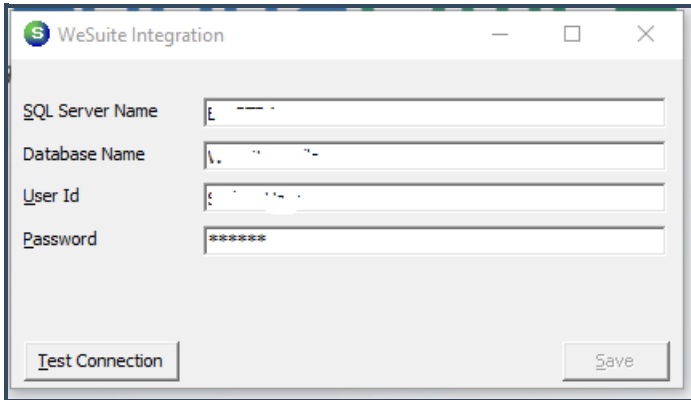
1. Open SedonaOffice, and go to [Tools] => [WeSuite Setup]



NOTE: If you do not see this option, then you can "force" the setting to be enabled with this SQL Statement:

```
UPDATE SS_Setup_Modules SET In_Process = (In_Process + 'w')is
```

- In the next screen, fill in the details for the WeSuite database. Fun fact: Check that you can connect via SSMS first, as this box will essentially do the same thing. After filling in the details, press [Test Connection]. If all goes well, then you'll be allowed to press [Save].



WeSuite Integration

SQL Server Name: []

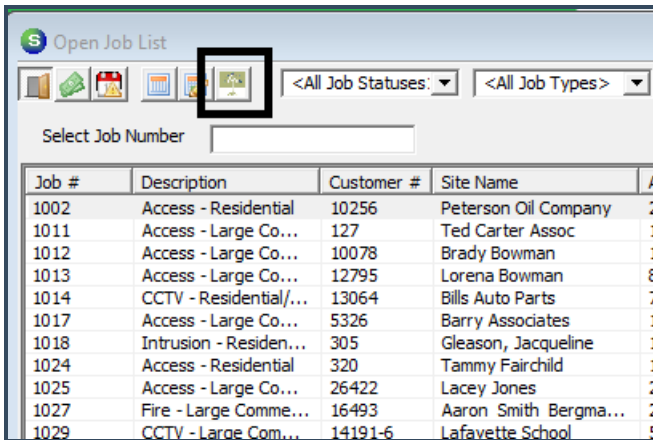
Database Name: []

User Id: []

Password: [*****]

[Test Connection] [Save]

- To make sure everything works, the easiest way to tell is to go into [Job Management] => [Job Queue] and Select the [WeSuite Orders] button. If anything is set up incorrectly, the screen will display an error.



Open Job List

<All Job Statuses: < > <All Job Types> < >

Select Job Number: []

Job #	Description	Customer #	Site Name	A
1002	Access - Residential	10256	Peterson Oil Company	2
1011	Access - Large Co...	127	Ted Carter Assoc	1
1012	Access - Large Co...	10078	Brady Bowman	1
1013	Access - Large Co...	12795	Lorena Bowman	8
1014	CCTV - Residential/...	13064	Bills Auto Parts	7
1017	Access - Large Co...	5326	Barry Associates	1
1018	Intrusion - Residen...	305	Gleason, Jacqueline	1
1024	Access - Residential	320	Tammy Fairchild	1
1025	Access - Large Co...	26422	Lacey Jones	2
1027	Fire - Large Comme...	16493	Aaron Smith Bergma...	2
1029	CCTV - Large Com...	14191-6	Lafayette School	5