

# Manitou Core - RSI Videofied - Installation and Configuration

12/27/2023 5:44 pm EST

## Information needed before an RSI Installation can proceed:

- IP Address of RSI Server
- Intended Receiver Line Prefix
- Intended Receiver Number
- Does the customer have their RSI equipment yet?

Log on to the RSI server at the customer site.

Begin downloading from:

## Connect to the Manitou server

Make sure they are licensed for video

Make sure the most recent Binary Objects have been imported

Get most recent BObject\_Files folder from the distributor folder, place it in the Manitou folder, go into the folder, and run the Import\_All.bat file. (it may be necessary to restart the broker to get the video types to show up)

## Open the Supervisor Workstation

Go to the Receivers screen

Create a new Receiver Line Prefix based on the answer to the question at the beginning of this document, then save.

Leave Supervisor Workstation open, but minimize it.


## Open the Manitou Operator Workstation

Create a new Transmitter Type for RSI, making sure to set the Reverse Cmd Protocol as RSI

Frontel GI, and making sure to mark the box for Video Capable, and making sure the dropdown has RSI Videofied Video selected.

- Event Monitoring
  - DFLT - Default Transmitt
  - DMP - DMP TX TYPE
  - OPENEYE - OpenEye
  - RSI - RSI Frontel
  - SUREVIEW - SureView
  - SURGARD - SurGard
  - VTK - VertX V1000
- Access Control
  - 3xLOGIC - 3xLogic
  - FUSION - DNA Fusion
- GPS
  - MGW - MediaGW

**Transmitter Type**

 Transmitter Type: RSI  
 System Type: Event Monitoring  
 Description: RSI Frontel  
 Protocol Type: RSI Frontel GI  
**Reverse Cmd Protocol:** RSI Frontel GI

**Transmitter Input ID**

Group	Base	Minimum	Maximum	Separator
Group 1 Value Range:	<input checked="" type="radio"/> Decimal <input type="radio"/> Hexadecimal	<input type="text"/>	<input type="text"/>	<input type="text"/>
Group 2 Value Range:	<input type="radio"/> Decimal <input checked="" type="radio"/> Hexadecimal	<input type="text"/>	<input type="text"/>	<input type="text"/>
Group 3 Value Range:	<input checked="" type="radio"/> Decimal <input type="radio"/> Hexadecimal	<input type="text"/>	<input type="text"/>	

TX Input ID:

**Attributes**

Audio Capable      Audio Type:   
 Create Call Session (No Listen-In)  
 Drop Listen-In if no Incident  
 **Video Capable**      **Video Type:** RSI Videofied Video  
 Raw Event Programming  
 Monitored Transmission Path  
 Generate L-T-T Only When Closed  
 Web Capable


Create a Default Account for RSI Videos using the new RLP and TXTYPE

## Go back to the Supervisor Workstation

Create a Reverse Route similar to the picture

- Emizon
  - Emizon
- HID Access Control
  - IP Receiver Default
- Honeywell WIN-PAK
  - WIN-PAK Default Route
- Interactive
- MediaGateway
  - MediaGateway
- MONTECH
- Red Care
- RedCare NGr
  - RedCare NGr Default
- RSI Frontel GI
  - RSI**
- Testing

**Reverse Channel Routes**

 Protocol: RSI Frontel GI  
 Sequence: 1  
 Description: RSI  
 Dealer:   
 Receiver line prefix: SVIEW  
 FEP: \*  
 Receiver: \*  
 Receiver line: \*  
 Receiver type: RSIFRONTELGI

On the receiver screen, add an RSI receiver to each FEP configuration, specifying TCP (in), The IP of the RSI Server, TCP Port 7645(this is an arbitrary number, as we will specify it later in the RSI setup, but it is a good idea to try to do most of them the same), the new RLP as the default, and the new default account as the Default Designation for unknown signals.

Receivers

Receiver Number: 7

Receiver Type: RSIFRONTLGI

Description: RSI

Port Type: TCP/IP (In)

Host IP: 192.168.75.145

Port Number: 7645

Host IP (Secondary):

Port Number (Secondary):

Soft Command Receiver Code:

Disabled

Defaults:

Default Receiver Line Prefix: RSI

Default Monitoring Group:

Default Designation for Unknown Signals:

Receiver Line Prefix: RSI

Transmitter ID: 999999

Default Account

Your new receiver should now show up in the FEP Commander as 'TCP Listen'

ID	Thread Type	Thread Status	Driver Name	Driver Status	Rec No	Signals Sent	Last Send
01	Listen	Started					
10	Standby	Started					
1A	Log	Started					
04	Delivery	Started				0	0
05	Driver	Started	ADEMCO	Up	1	86365	06/11 19:37:50 ...
06	Driver	Started	MLR2	Up	2	44768	06/11 19:37:13 ...
07	Driver	Started	MLR2000	Up	3	3202	06/11 16:59:02 ...
0A	Driver	Started	BOLDIP	Up	6	2342	06/11 19:19:21 ...
0C	Driver	Started	AES7701-A...	Up	4	22635	06/11 19:37:18 ...
0D	Driver	Started	AES7701-A...	Up	5	1	05/19 19:17:29 ...
1B	Driver	Started	RSIFRONT...	TCP Listen	7	1	06/11 19:22:27 ...
1C	Control	Started					

Ready Connected

At this point the Manitou portion of this configuration is complete.

# RSI Server

You can now return to the RSI server and continue the installation from there. By now the file you downloaded should be finished. Unzip this file. The Zip Password is 'videofied' (without the quotes)

Run the Setup.exe file

Specify the language (usually English). Click OK

Click Next

Specify a Serial Number of 'SERVER' (without the quotes, case sensitive) and click next

Setup - Frontel

**User Information**  
Please enter your information.

User Name:  
Staff

Organization:  
Integrated Systems

Serial Number:  
SERVER

[Version 2.6.4.2]

< Back   Next >   Cancel

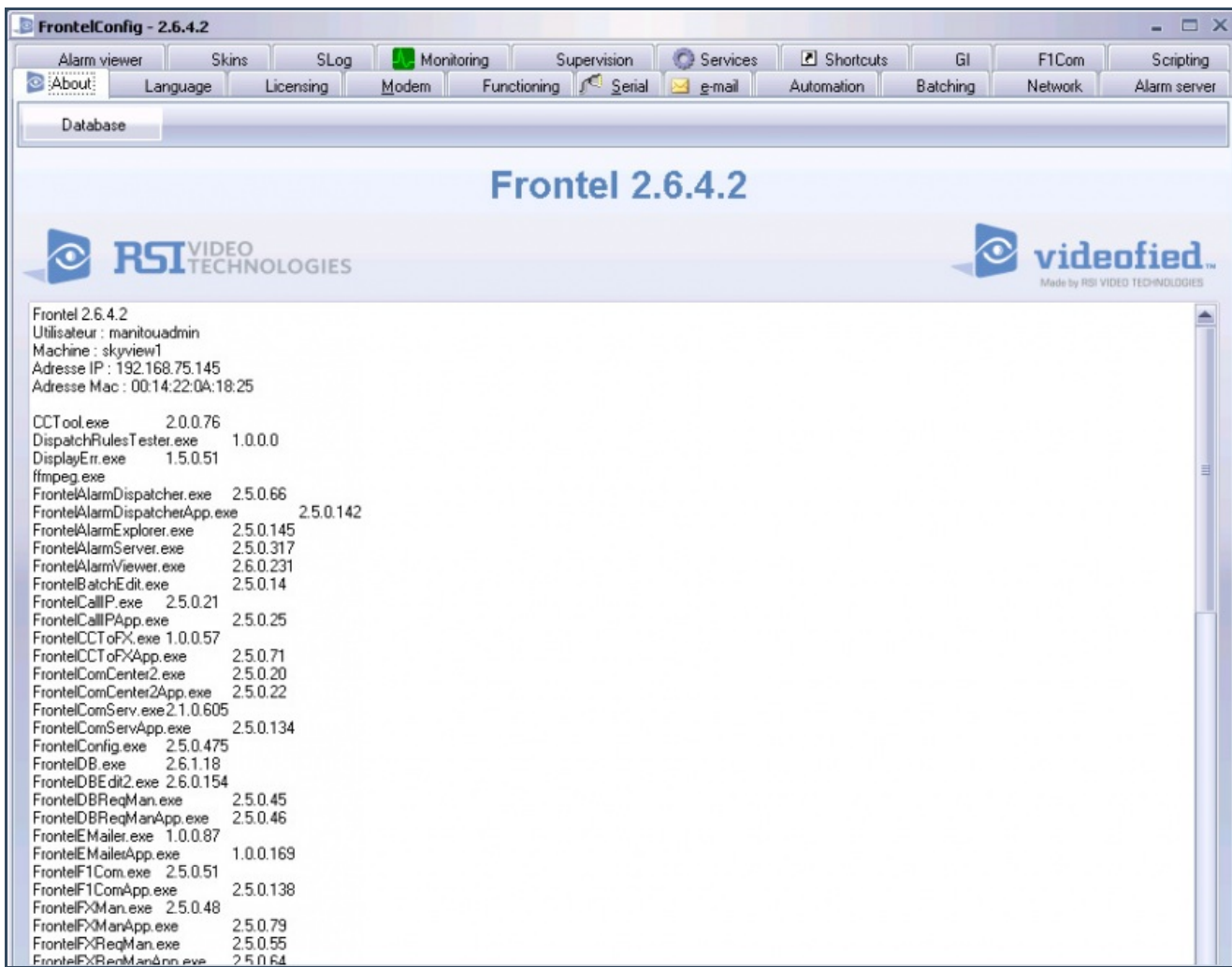
Click Next on the 'Select Destination Location' screen

Click Next on the 'Database' screen

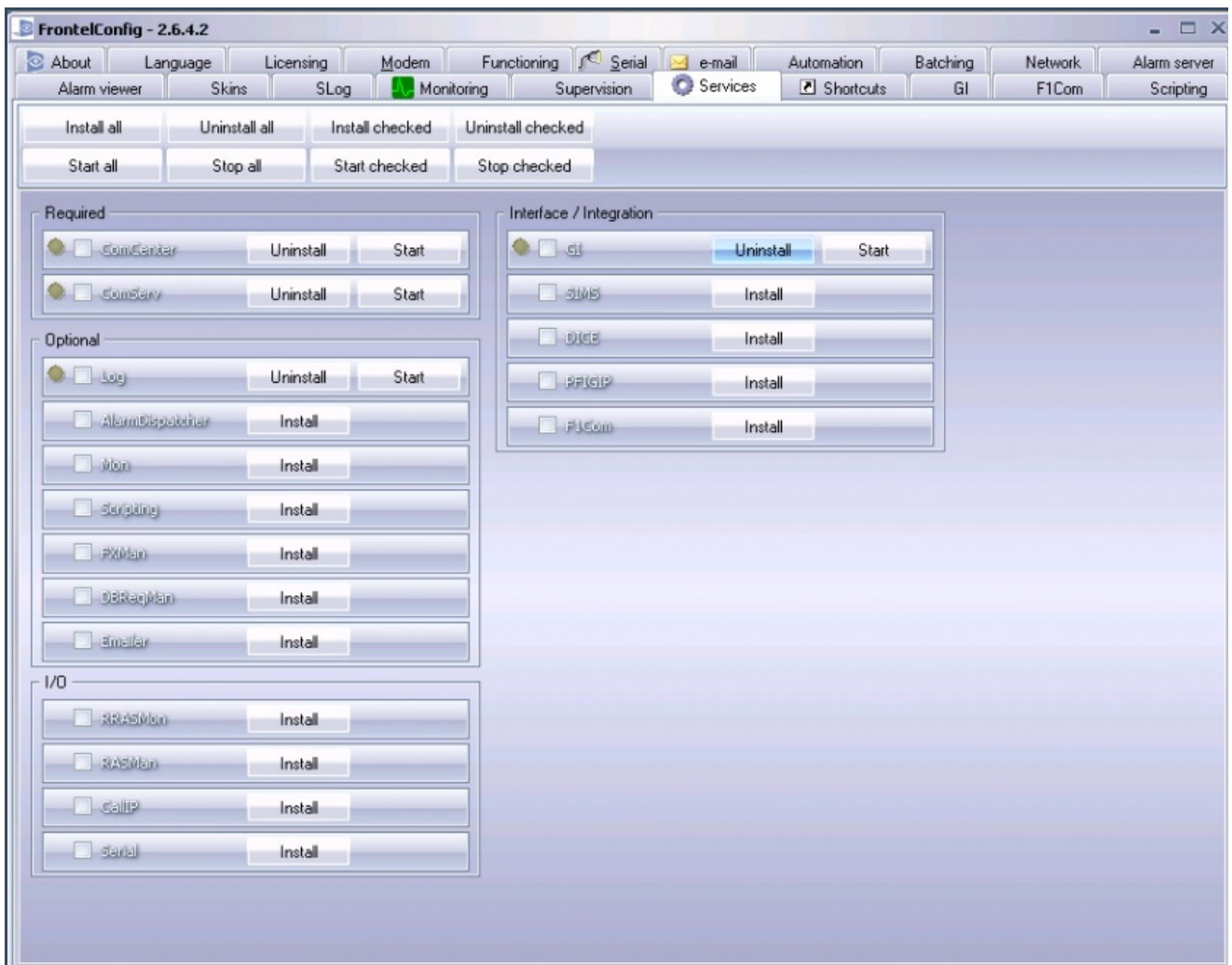
Click Next on the 'Select Start Menu Folder' screen

Click Install

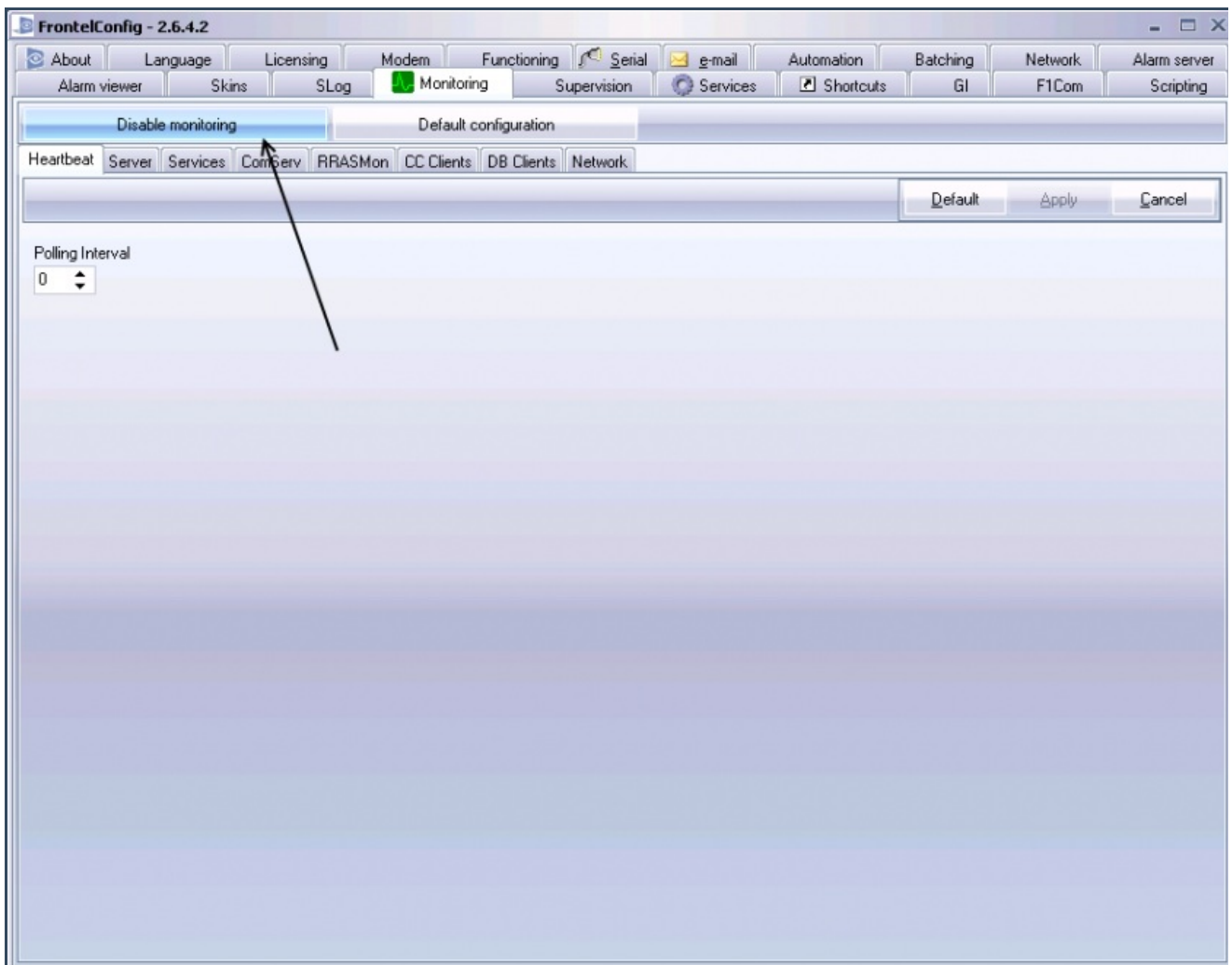
A FrontelConfig window will pop up. Click on the Services Tab



On the Services tab, click the install button next to: ComCenter, ComServ, Log, and GI



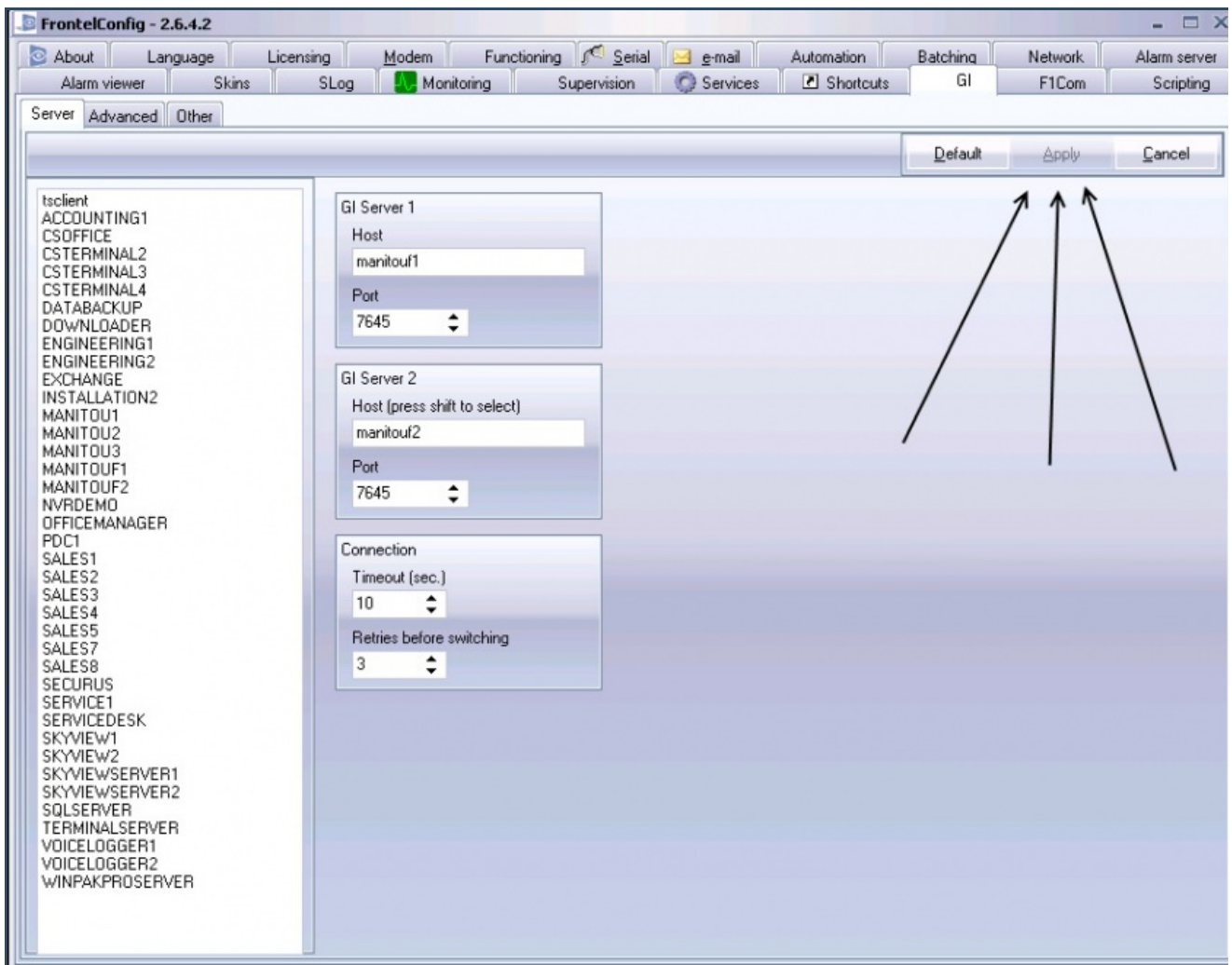
Click on the Monitoring Tab. Click on 'Disable Monitoring'



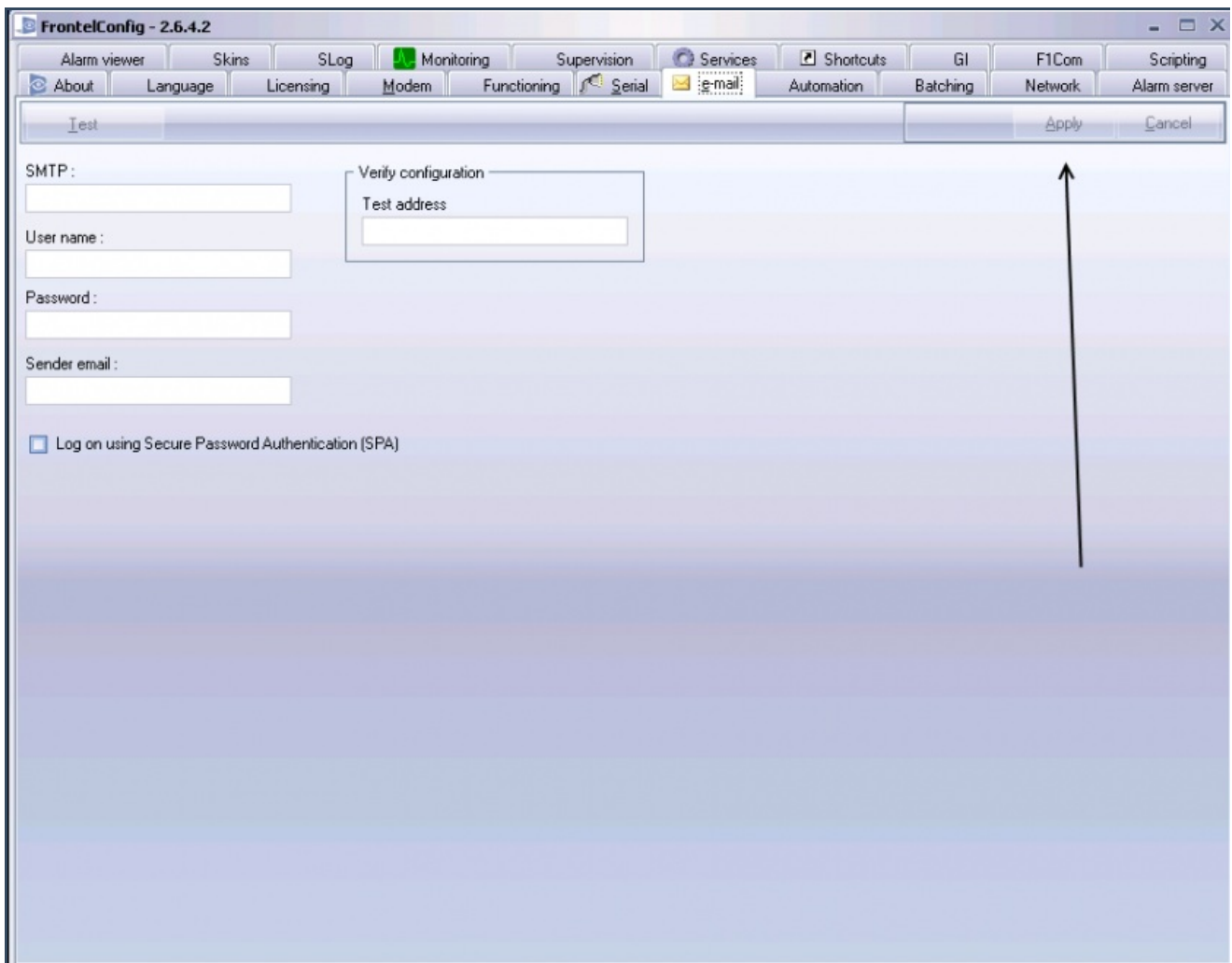
Click on the GI tab. Specify the IP's of the FEP machine(s) in the host blanks, and type 7645 in the blank for the Port on BOTH blanks.

Change the number of Retries to 3.

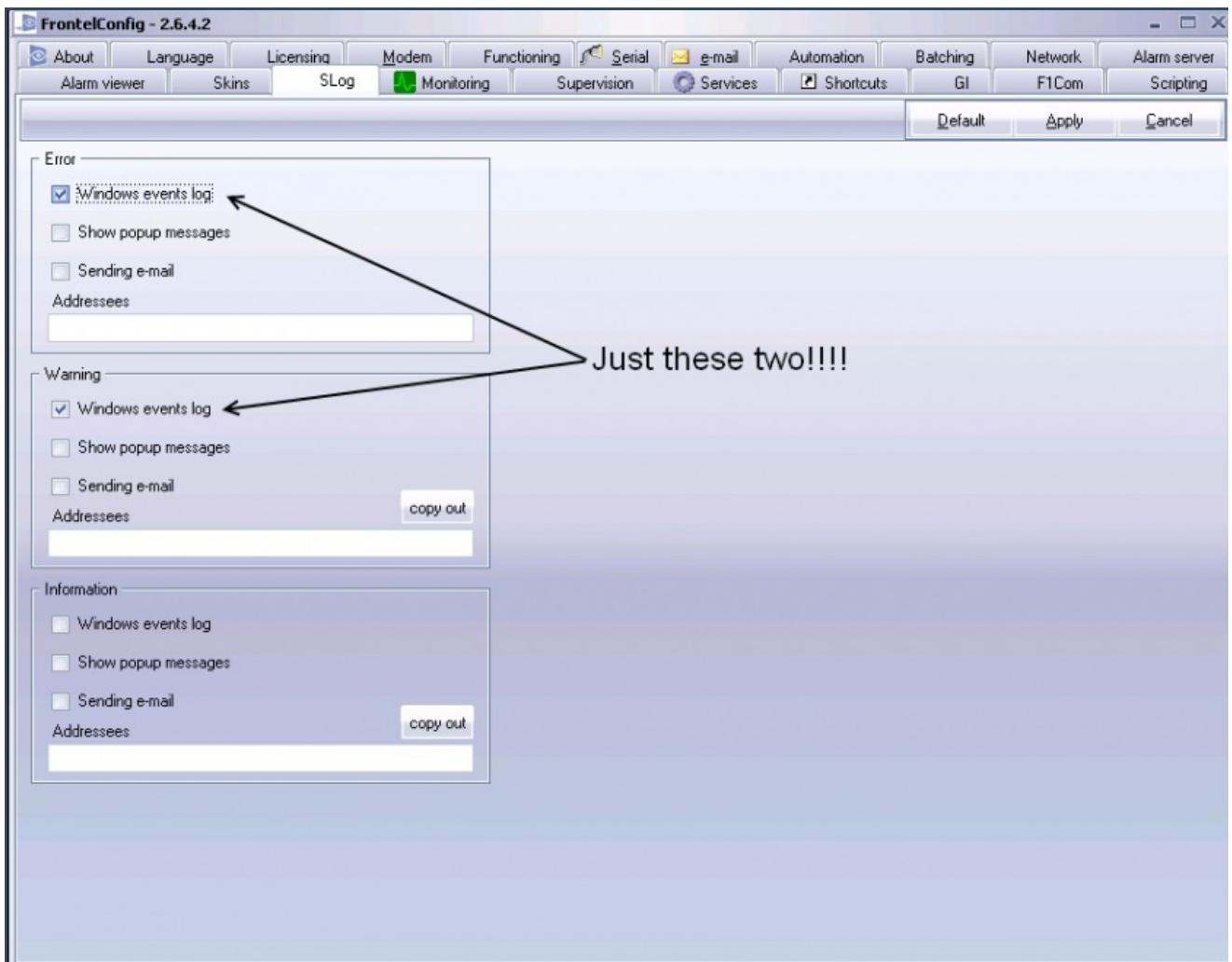
Click Apply. If you don't click Apply, this won't save.



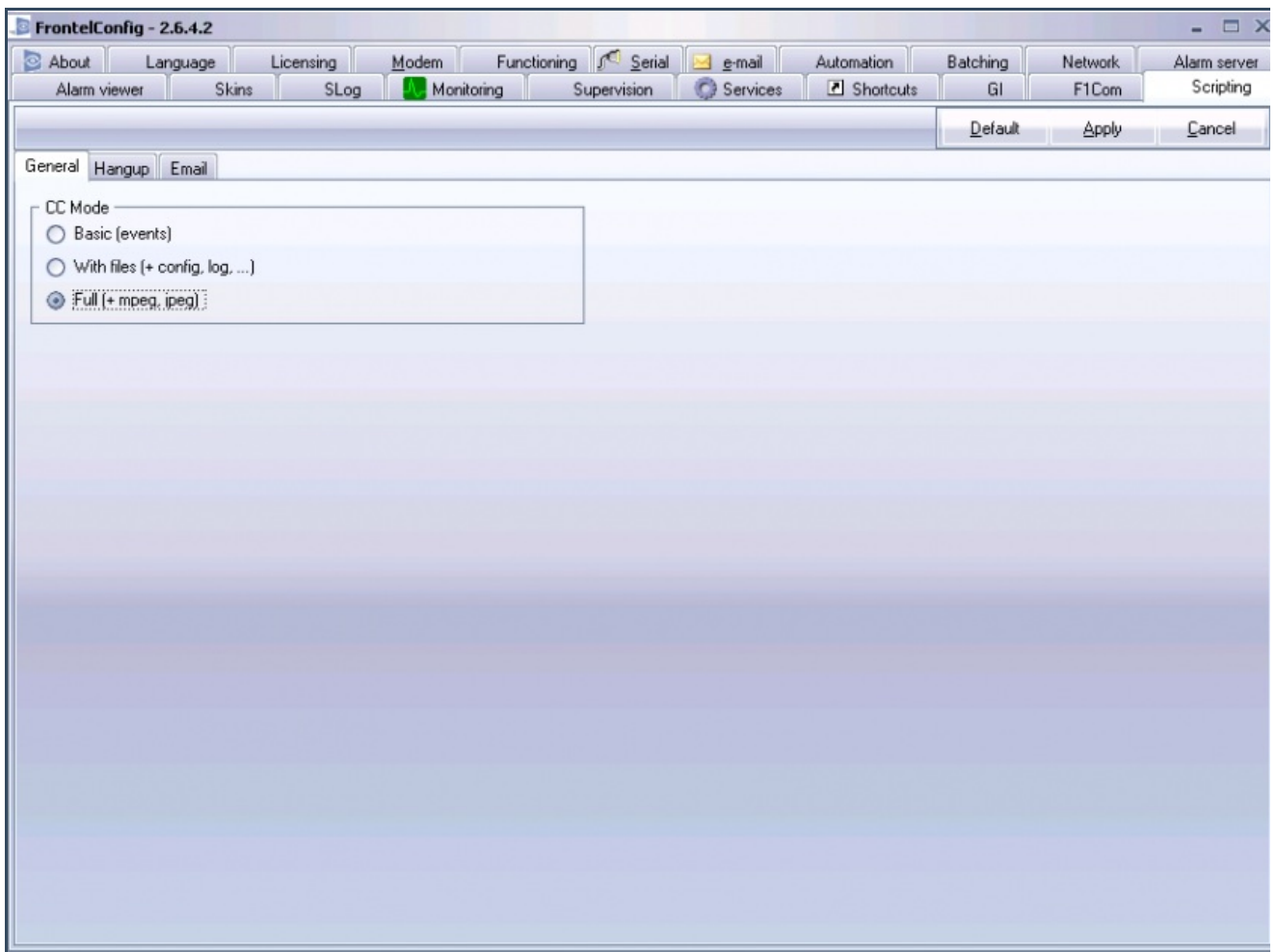
Click on the Email tab. If you have it available, enter server and login information here. If you add anything CLICK APPLY.



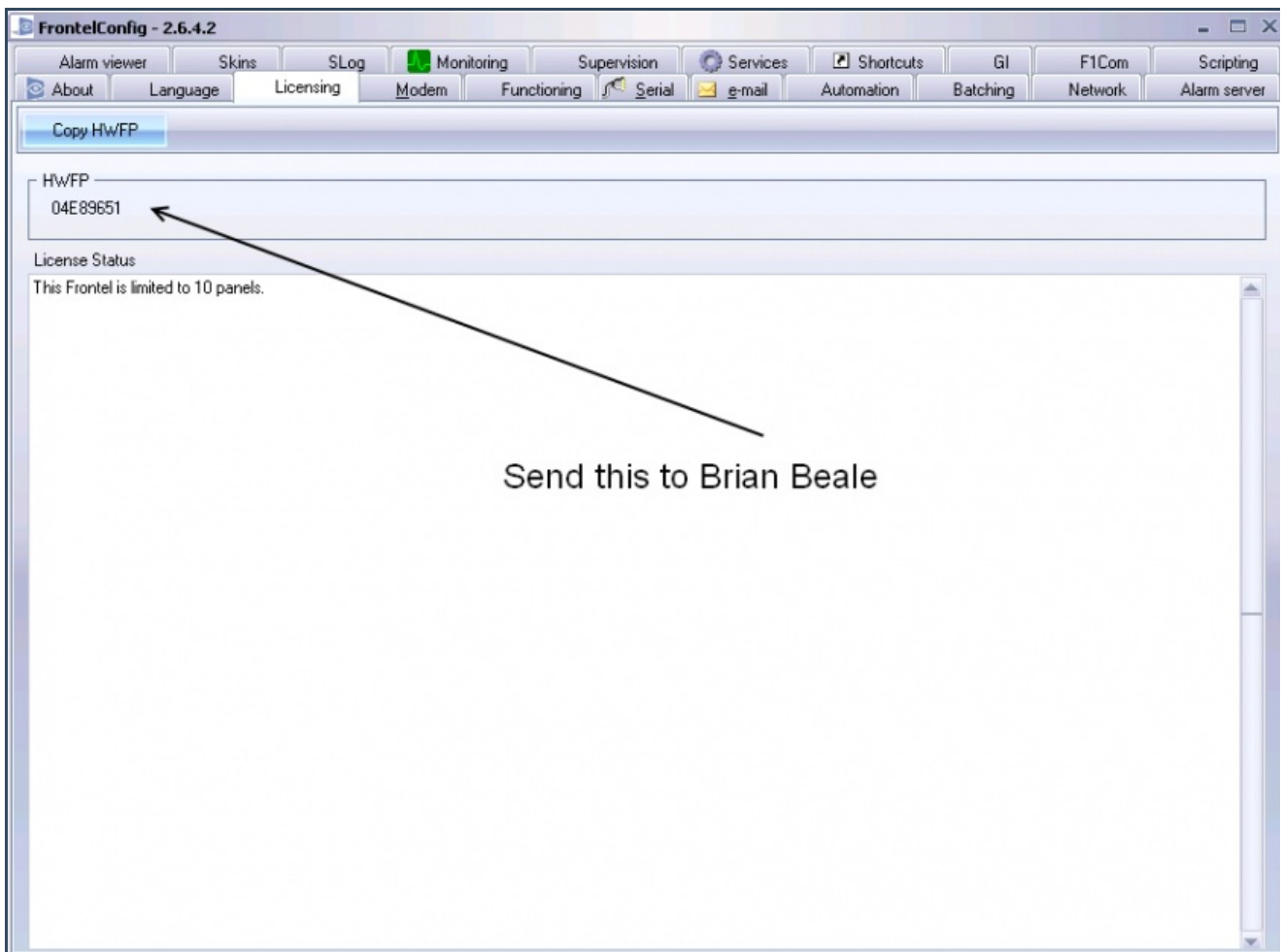
Click on the SLog tab. Uncheck all of the boxes EXCEPT the first in the 'Error' box and the first in the 'Warning' box.



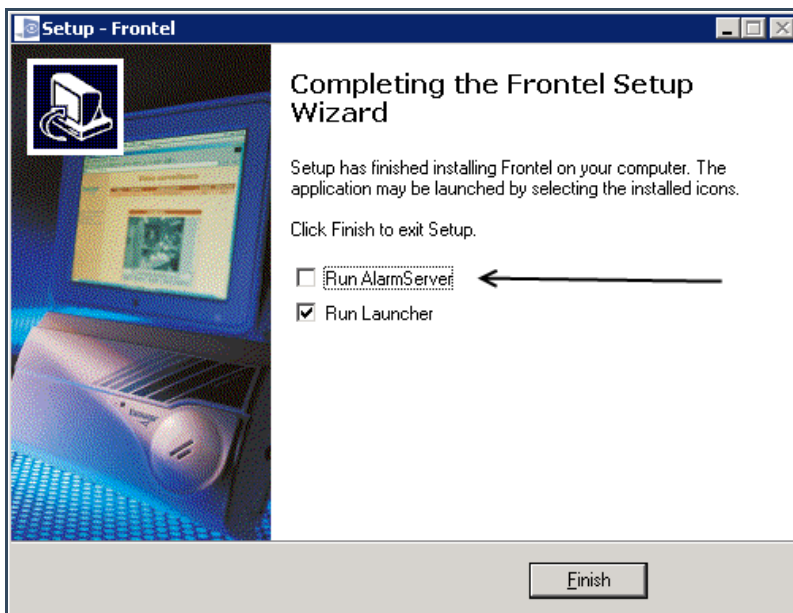
Click on the Scripting tab. Make sure the 'Full' radio button is checked. CLICK APPLY.



Click on the Licensing tab. Copy the HWFP number into an email and send it to Brian Beale (BBeale@videofied.com) with the details about the site.



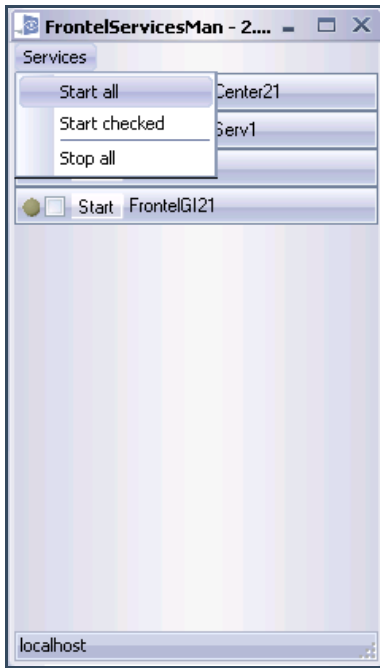
Exit out of the FrontelConfig Program by using the 'X' in the upper right corner. You will be returned to the installer screen. Uncheck the box for 'Run Alarm Server' and click Finish



The FrontelLauncher will come up. Click on the ServicesMan icon.



On the FrontelServicesMan Screen, click the menu item labeled 'Services' and click Start All



When started, all the services will appear with a yellow light. At this point the installation of the RSI server is complete.

Return to the Manitou Server, and view the FEP Commander. It should show the status of the RSI receiver as 'Up'. You can now notify the customer, and they can begin their testing with Videofied.

