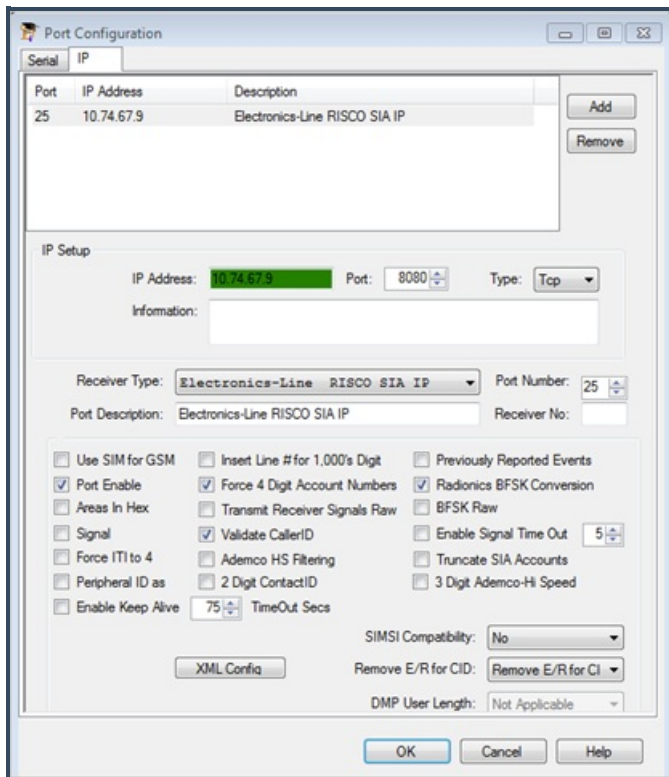


SIMS - How to setup RISCO Cloud Receiver in SIMS III Receiver Server

12/28/2023 12:54 pm EST


These steps must be done in SIMS III Receiver Server and the [RISCO Cloud Setup for SIMS III for Windows](#) must be done as well.

In SIMSIII Receiver Server, the customer should have the receiver selected and configured. It will be a SIA receiver like the Electronics-Line RISCO SIA IP but it could be something else.



Under XML Config, select TCPServer. That should be all that needs to be done in SRSIII.

XML Receiver Settings



IP Receiver Type
TCP Server

Prefix
10

End of Transmition
13

Encryption Key

XML Example

```
<Signal>  
<Account>100007</Account>  
<RRLL>8002</RRLL>  
<Zone>BA001</Zone>  
<Area></Area>  
<Event Type></Event Type>  
<Description></Description>  
<Latitude></Latitude>  
<Longitude></Longitude>  
<Event Time>06/22/15 22:00:00</Event Time>  
</Signal>
```

Save Cancel