

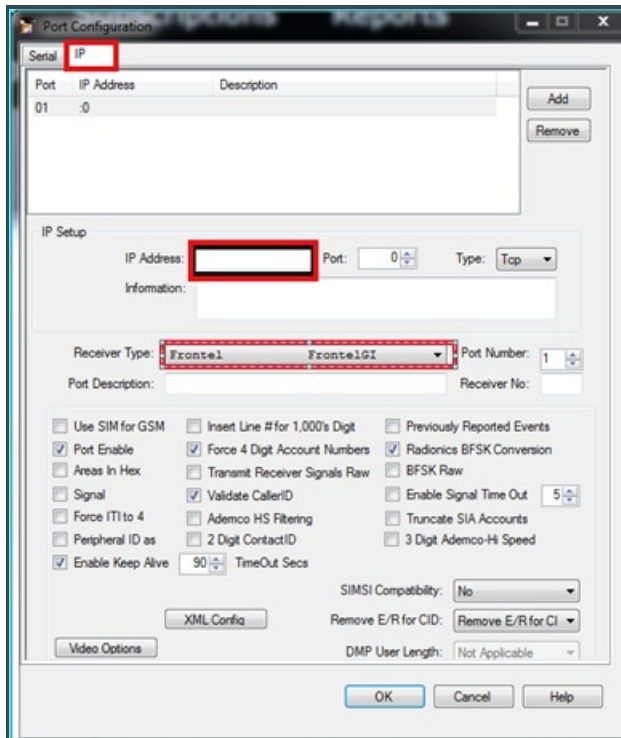
SIMS - How to Set Up Frontel Interface in SIMS III Receiver

01/04/2024 10:47 am EST

Pre-Requisites:

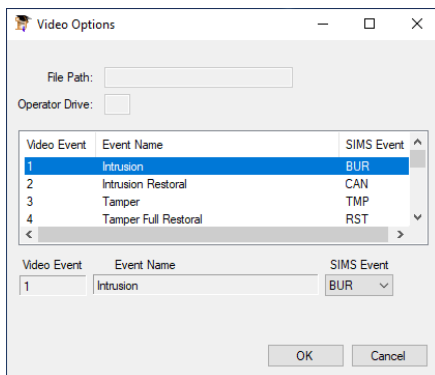
- SIMS III Receiver Server on latest update
- FrontelGI Service running on the Frontel Server
- Local IP of SIMS III Receiver Server computer under GI Server 1 Host
- Latest version of Frontel viewer on Operator Workstations

Setup Instructions:



1. Setup Receiver in SIMS III Receiver Server by navigating to Configure>Port Setup. Go to the IP tab and add a new IP port by clicking Add and selecting receiver type FrontelGI. The options to be set are as below:
 - a. IP: IP address of the SIMS III Receiver Server computer
 - b. Port: 1566 (Default)
 - c. Type: TCP

- Restart SIMS III Receiver Server and heart beats should be received on the Port for the Frontel Receiver.
- Check the Video Options page (on the Port information) to change any default settings. This page controls what Event Types SIMS will use on specific Frontel Events that are transmitted to automation. As shown below, this contains the "Frontel Event", "Description" and "SIMS Event". This can be customized as to how the Events come through to SIMS.



- When a new video is reported to SIMS, the signal will come in with a zone "FRONTEL", which must be programmed into the Base Account or Zone Account as a VID event type. This Event Type may not be in the Event Type list as a default, so it will need to be added to the "Event Priority Levels".
- The steps for setting up the SIMS III for Windows client to automatically open videos when they report in can vary depending on the version of SIMS, so it's best to contact SIMS support to assist with this configuration step.