

AutoDial Configuration

05/07/2026 3:12 pm EDT

PBX server is required for AutoDial, for information on setting up the PBX server please see the [PBX Installation Overview document](#).

Default Application Auto Dialer Integration

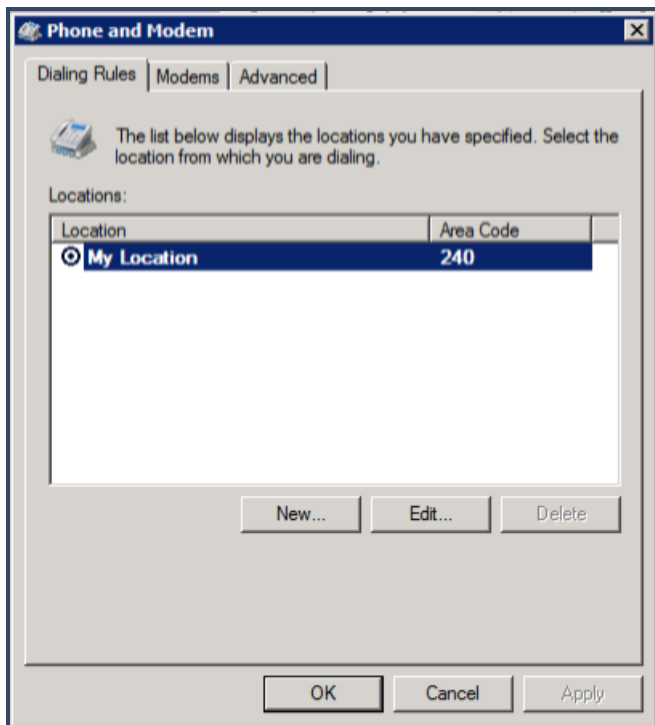
[default-application-auto-dialer-integration.pdf](#)

This document provide guidance on a new generic TAPI method intended for situations where the customer's phone system does not directly integrate with Manitou.

Adding the Bold TAPI Driver

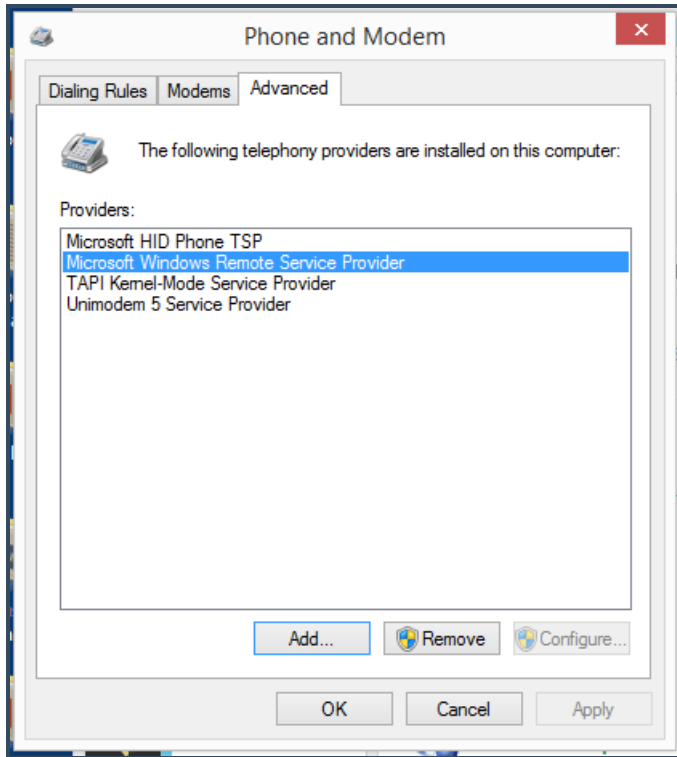
1. Copy the **BoldPBX.tsp** file from the distributor package 7 (32-bit) or 8 (64-bit) into the **SysWow64** folder for 32-bit machines, or the **System32** folder for 64-bit machines.
2. Open the Control Panel for your Workstation, and select the **Phone and Modem** option.

Result: the Phone and Modem window displays as shown in the following screenshot:



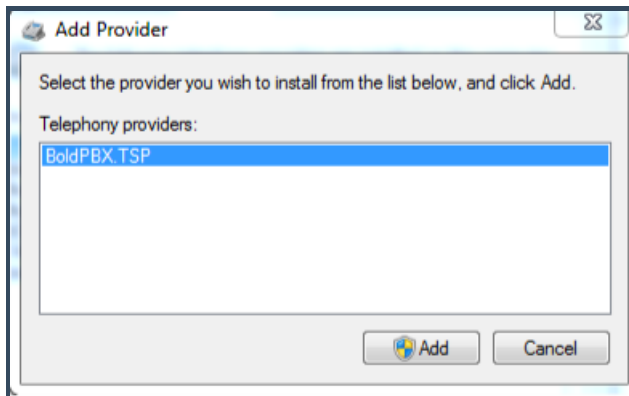
3. Select the **Advanced** tab.

Result: the Advanced tab of the Phone and Modem window displays as shown in the following screenshot:



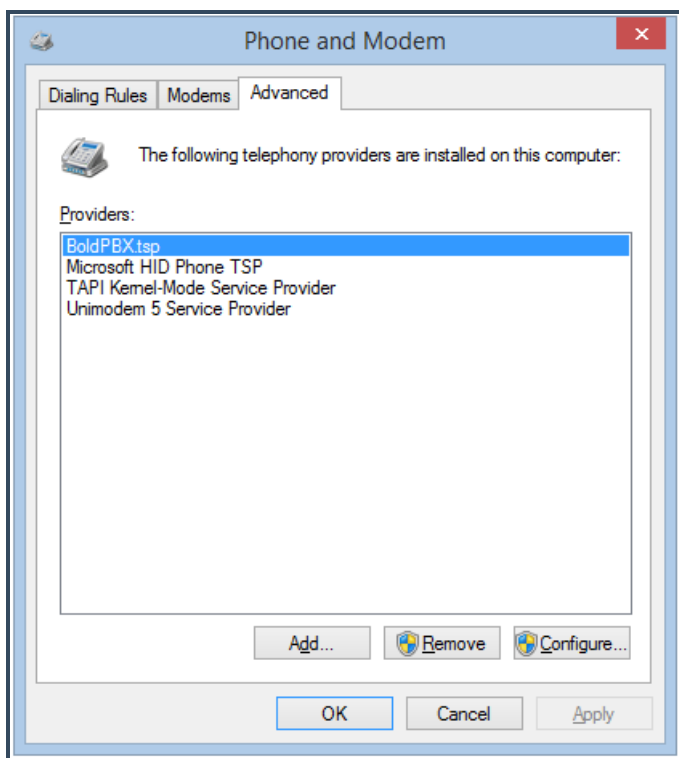
4. Click **Add**.

Result: the Add Provider window displays as shown in the following screenshot:



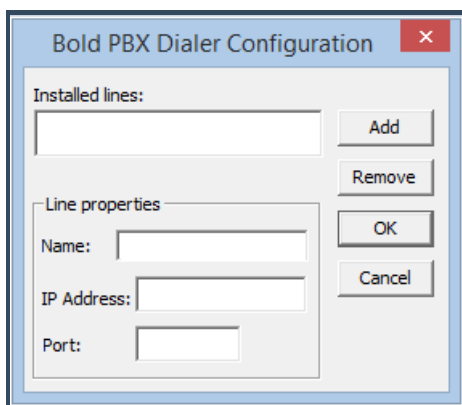
5. Select the **BoldPBX.TSP** option as shown in the previous screenshot, and then click **Add** again.

Result: the BoldPBX.tsp TAPI Driver now displays in the Providers list as shown in the following screenshot:



6. Select the **BoldPBX.tsp** option, and then click **Configure**.

Result: The Bold PBX Dialer Configuration window displays as shown in the following screenshot:



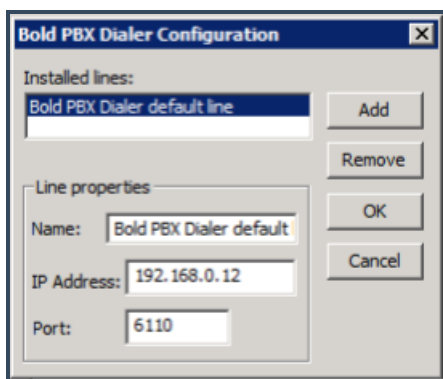
7. Click **Add**, and add a default line to the **Bold PBX Dialer**.

8. Enter the IP address for your **PBXServer** into the **IP Address** field.

9. Enter the port on which the system will listen into the Port field, and then click **OK**.

Note: the standard port number for the PBX Server is "6110".

10. Although your entry in the **IP Address** field may vary, your entries on the **Bold PBX Dialer Configuration** window now resemble the entries on the following screenshot:



11. Click OK.

Setting Up the AutoDialer

AutoDialer license will need to be licensed on all Manitou servers for the max amount of 99999999999

Perform the following steps to set up the AutoDialer in Manitou:

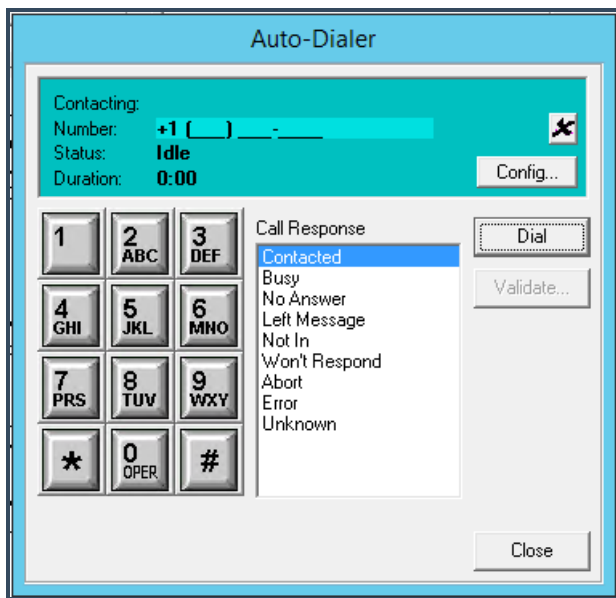
1. Open the **Manitou Supervisor Workstation**.
2. Navigate to the **Maintenance** menu, and select **Users**.

Result: The user form displays as shown in the following screenshot:

User		Password Information	
User ID:	1	Change Interval:	Never
Name:	User A	Password:	*
Contact Point:		Confirm Password:	*
Extension:		<input type="checkbox"/> Change at next logon	
		<input type="checkbox"/> Locked Until	00:00

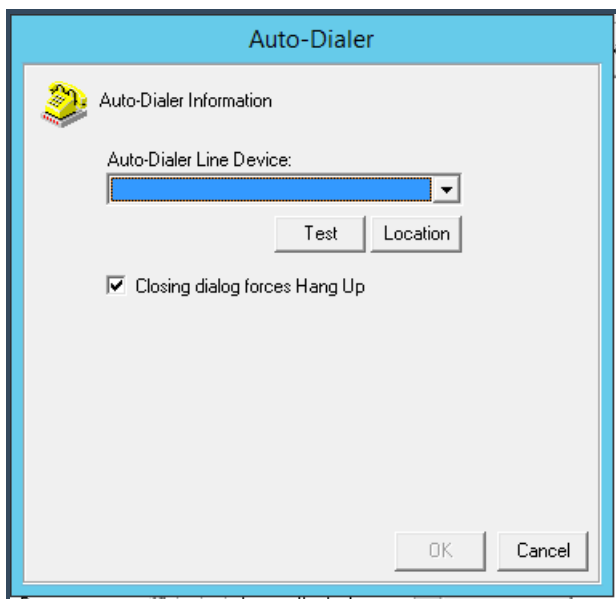
3. Open the user for whom you want to add **AutoDialer** access.
4. Click **Edit**.
5. Enter the **extension** for which you want to add AutoDialer into the **Extension field**.
6. Click **Save**.
7. Open the **Manitou Operator Workstation**.
8. Navigate to the **Tools** menu, and select the **Phone Dialer** option.

Result: the Auto-Dialer window displays as shown in the following screenshot:



9. Click **Config**.

Result: the Auto-Dialer window displays as shown in the following screenshot:



10. Select the **Bold PBX Dialer default line** option from the **Auto-Dialer Line Device** drop-down list box, and then click **Test**.

11. When the test completes, click **OK**.