

# SIMS III for Windows Installation and Setup

12/28/2023 12:30 pm EST

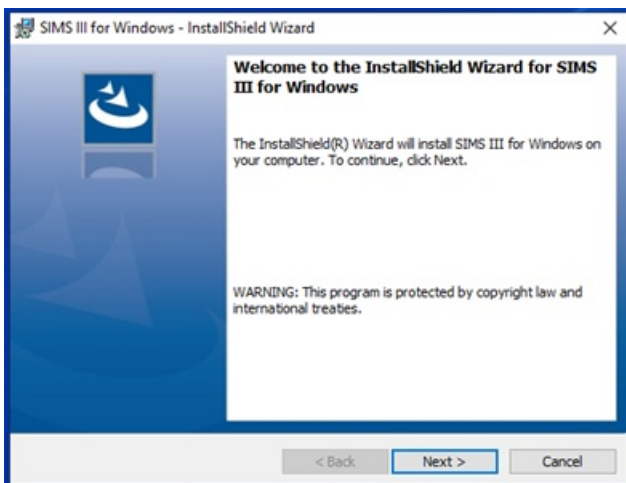
## Pre-Requisites:

- All Windows Updates installed on computer
- Microsoft .net 4.7 or higher installed
- Automatic Windows updates disabled

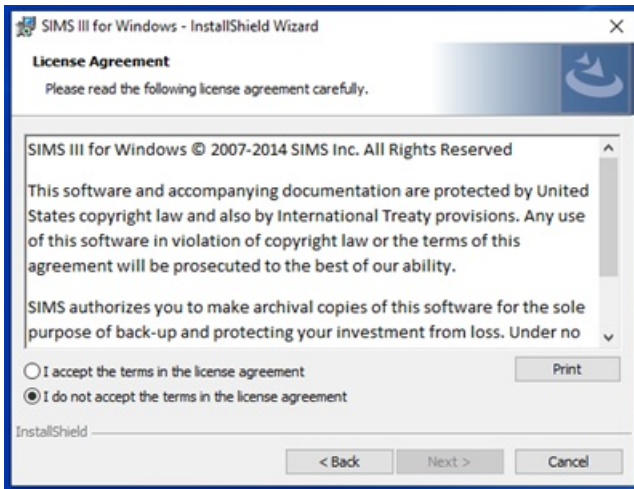
## Installation Instructions:

**\*\*Computer needs to be logged in as an Administrator\*\***

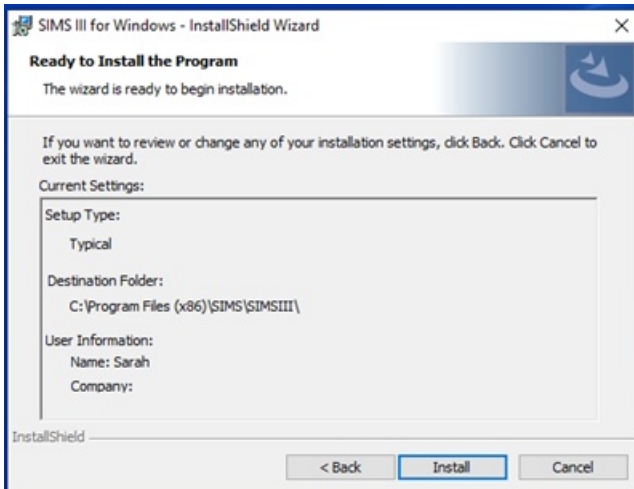
1. Transfer SIMS III for Windows executable to destination computer ([SIMSWin3.exe](#)).
2. Right click on SIMSWin3.exe and Run As Administrator.
3. Installer will load and InstallShield Wizard will launch:



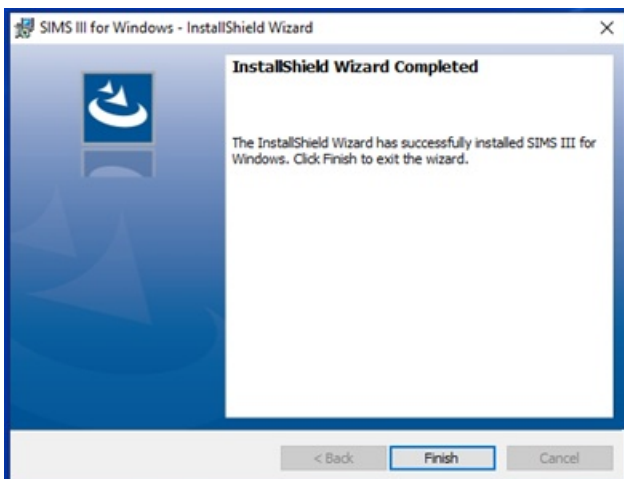
4. Click Next to get to the License Agreement section:



5. Click I accept the terms in the license agreement and then click Next to get to the Ready to Install the Program section:



6. Click Install to install the SIMS III for Windows files. Once the files have installed, then the InstallShield Wizard Completed section launches:



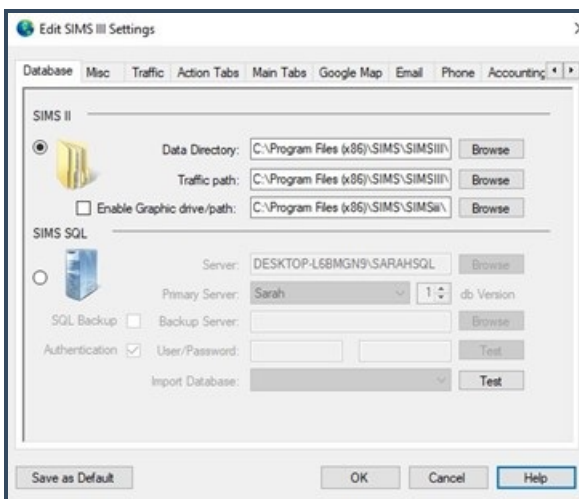
Click Finish to close installer.

## Setup Information

- Make sure product is updated using Live Update before continuing
- For Flat File customers, a network drive will need to be mapped to the database server location if the program is not being installed on the server
- For SQL customers, you will need to note the name of the SQL server. Also, if the customer is not using Windows Authentication, then you will need to have the user name/password to log into the SIMS database
- Demo database that comes with a new installation is located at C:\Program Files (x86)\SIMS\SIMSIII
- To log into the demo database: User name: sim and Password: 002



- Navigate to System>Edit SIMS III Settings to set the database location



- Database tab:
  - Flat File - under the SIMS II section, set the Data Directory and the Traffic path by using the Browse button to navigate to the mapped Network drive

- SQL - click on the button in the SIMS SQL section to change the option from SIMS II (Flat File) to use SIMS SQL. Enter the SQL Server name, choose the option to use Windows Authentication or enter the user name/password previously set up, click on the Test button next to User/Password to test connection to the SQL Server. Then choose the Primary Server (database) from the dropdown - which should be SIMSData
- Misc tab:
  - Set up the form's location (if the customer is using Forms on the Network drive)
- Email tab:
  - Utilizing the option to either use the customer mail server to send out reports or they can set up to use the Comserver 3 add-on module. If the customer is using their own mail server, the mail server information is set up on this tab

*\*\*Settings.xml files contain the database and settings information. It is logged PER workstation user, so if multiple Windows users utilize SIMS III on the workstation, the file needs to be copied across to all users (batch file can be set up to run if need be). Location of Settings.xml file (C:Users\user\AppData\Roaming\SIMS)\*\**