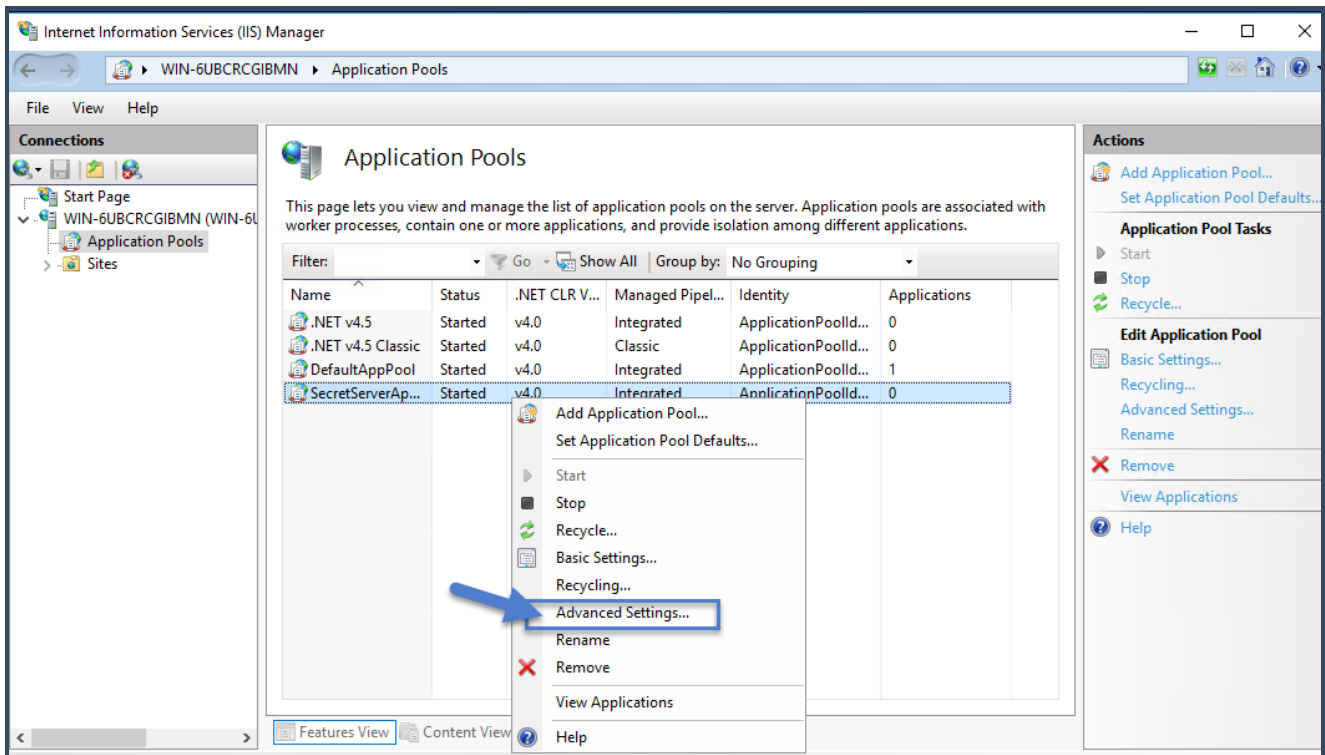


SedonaCloud IIS Configuration for Sedona-X Mobile

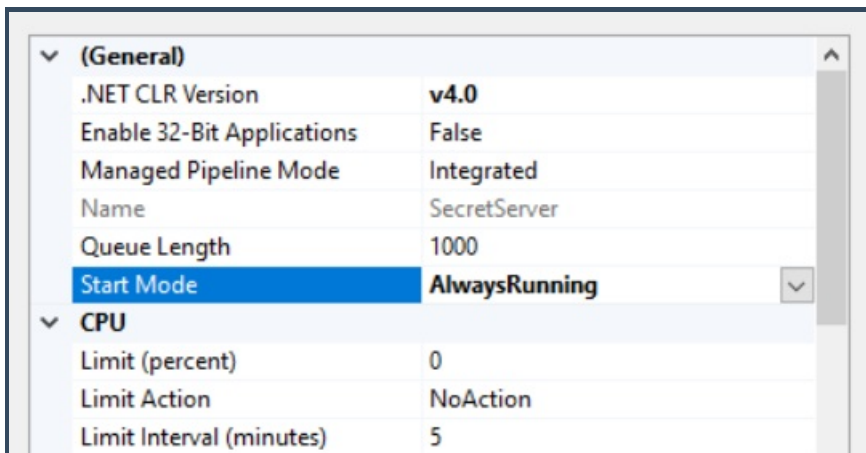
12/28/2023 3:55 pm EST

These settings below will need to be adjusted for SedonaCloud to operate with Sedona-X Mobile and will eliminate slow startup times and initial API calls.

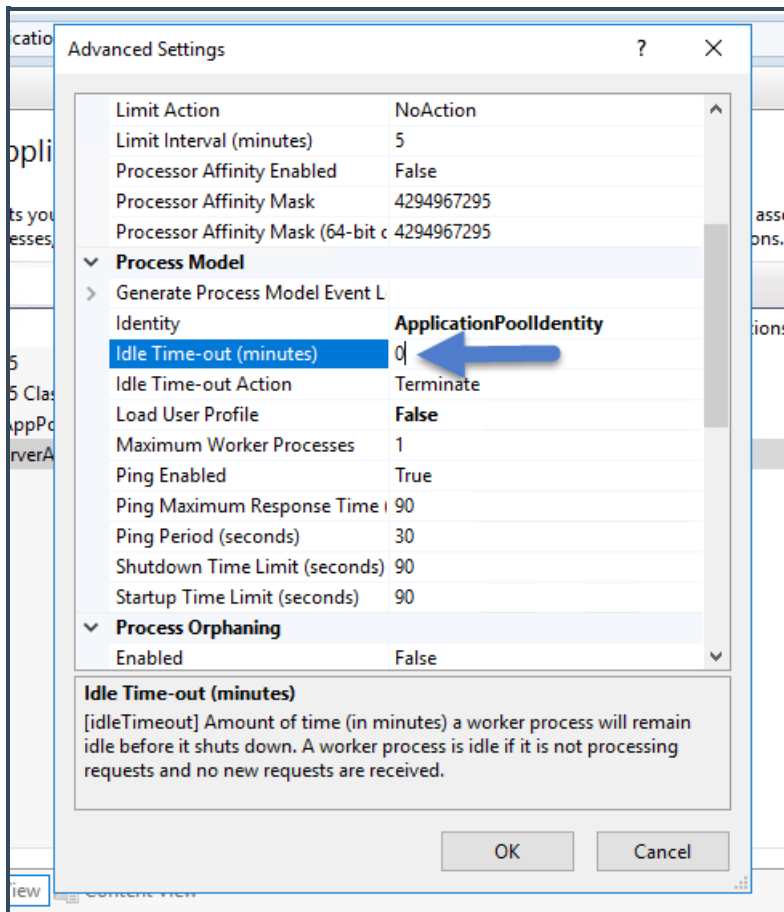
Right-click on the SedonaCloud Application Pool, and then click Advanced Settings.



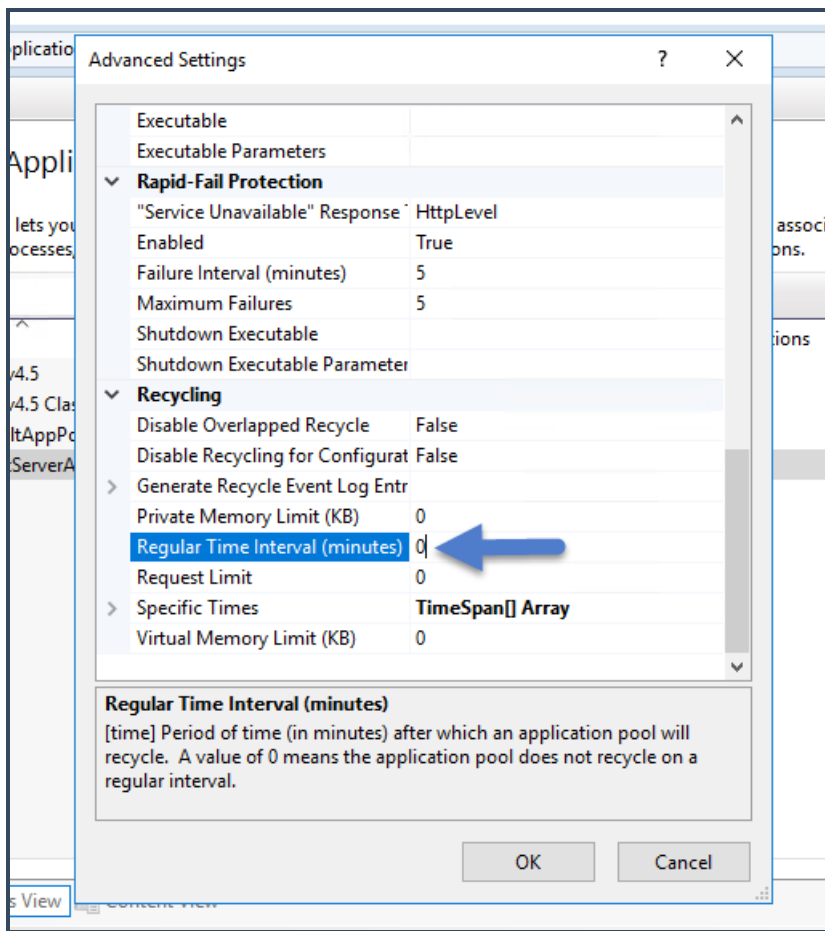
Under (General) section, set Start Mode to AlwaysRunning.



Under the Process Model section, set Idle Time-out (minutes) to 0.



Under Recycling, set the Regular Time Interval (minutes) to 0.



Last, recycle the application pool to make sure all settings have taken effect.