

Important Backups

01/05/2024 6:14 pm EST

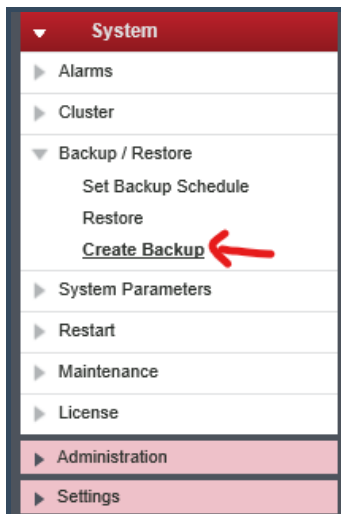
Backups for Critical Systems

Aeonix

1. Using Internet Explorer, Log in to the aeonix management center with proper credentials

a.

2. On the left hand pane, select System > Create Backup



a.

3. In the bottom right, click Create.

4. Then click Download File.

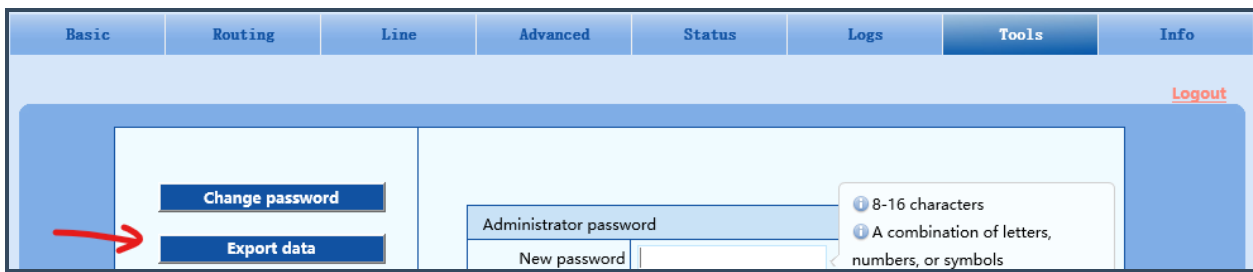
5. Save the file in multiple locations. Put it somewhere on your machine, as well as somewhere externally (External Hard Drives)

TGW

1. Open Internet Explorer

2. Login to 172.16.142.87 with proper Credentials

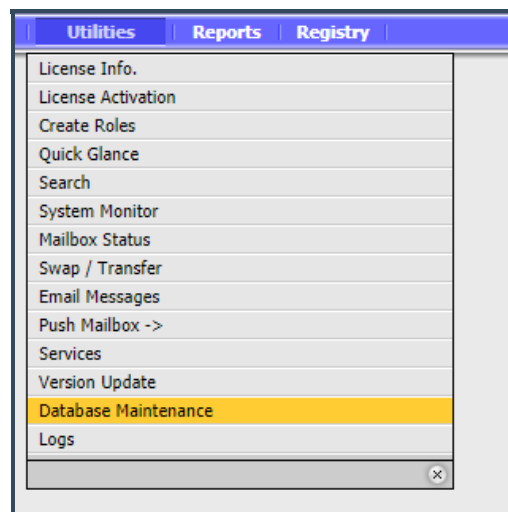
3. Go to Tools > Export Data



4. Click Download
5. Save the file somewhere locally as well as somewhere externally.

Seamail

1. Using Internet Explorer login to the seamail console at <http://172.16.142.92/>
2. Login with proper credentials

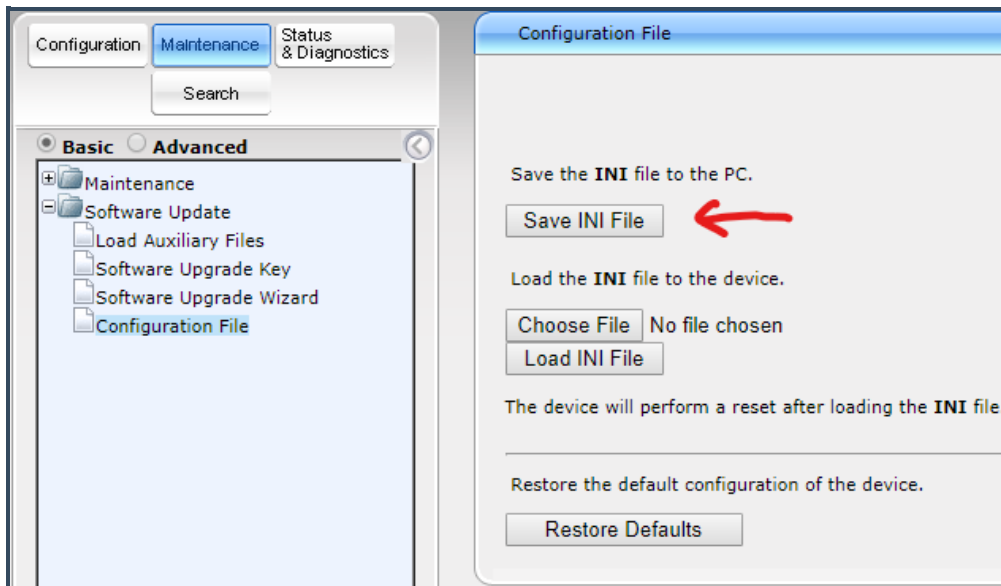


3. Click Utilities > Database Maintenance
4. Click Backup to Directory
5. Once you get the "Local Backup Successful", window, click OK.
6. Click Retrieve Backup to Local PC
7. A download will begin. Save the file somewhere local, as well as in external locations.

M800 (PRI)

1. Open internet explorer and navigate to 172.16.142.90

2. Login with proper credentials
3. Click Maintenance > Software Update > Configuration File > Save INI File to the PC



5. Save the file somewhere on your desktop as well as on an external location.

INGATE (SIP)

1. Open a web browser and navigate to 172.16.142.84
2. Login with proper credentials
3. Select Administration > Save Config to CLI File

The screenshot shows the Sonicwall configuration interface. At the top, there is a navigation bar with buttons for Administration, Basic Configuration, Network, Rules and Relays, SIP Services, SIP Traffic, SIP Trunks, Failover, Virtual Private Networks, and Quality of Service. Below this, a message states: "A new Ingate SIParator/Firewall version exists. Get the upgrade [here](#)." The main configuration area has a sub-header with buttons for Save/Load Configuration, Show Configuration, User Administration, Upgrade, Table Look, Date and Time, Restart, and Change Language. The 'Save/Load Configuration' section is active and contains several sub-sections:

- Test Run and Apply Conf (Help):** Includes a text input for "Duration of limited test mode:" set to "360 seconds" and an "Apply configuration" button.
- Show Message About Unapplied Changes:** Includes three radio button options: "On every page" (selected), "On the Save/Load Configuration page", and "Never".
- Backup (Help):** States "The permanent configuration is not affected." and includes buttons for "Save to local file" and "Load from local file". The "Local file:" field shows "Choose File" and "No file chosen".
- Save/Load CLI Command File (Help):** States "The permanent configuration might be affected by loading a CLI file." and includes buttons for "Save config to CLI file" (highlighted with a red arrow) and "Load CLI file". The "Local file:" field shows "Choose File" and "No file chosen".
- Abort All Edits (Help):** States "The permanent configuration is not affected." and includes an "Abort all edits" button.
- Reload Factory Configuration (Help):** States "The permanent configuration is not affected." and includes a "Load factory configuration" button.

4. The ".cli" file will download to your computer. Rename the file with IP address of the device and the date it was created
5. Next, In the "Backup" area above the button you just clicked, Click, Save to Local file. Creates a ".cfg" file.
6. Rename the file to [IP address]_[Date]
7. Save both files somewhere locally on machine and in an external location.

Sonicwall

1. Process will need to be followed for each Sonicwall device
2. Login to Sonicwall with proper credentials
3. If using older GUI, follow these steps:
 - a. Click System > Settings



4. Click Export Configuration
 - a. Export

5. If using the newer GUI, follow these steps
 - a. Click Firmware & Backups
 - b. Import/Export Configuration
 - c. Export Configuration
 - d. Export

6. Once the config has been downloaded, rename the file for the appropriate Sonicwall and save the configuration somewhere locally and externally.