

# How to Re-Run a a Saved Query in the SedonaOffice Query Builder

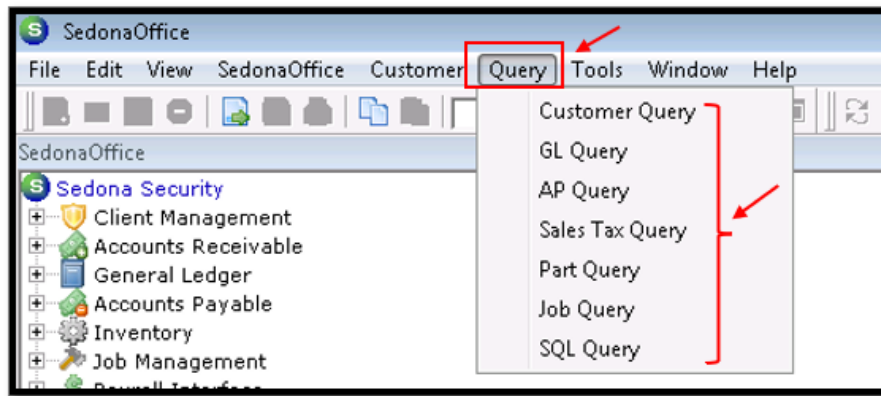
05/31/2024 8:47 am EDT

When creating Queries in the Query Builder you have the option to Save the Query, so you do not have to re-create it every time. When you are ready to Use that Saved Query follow the steps below.

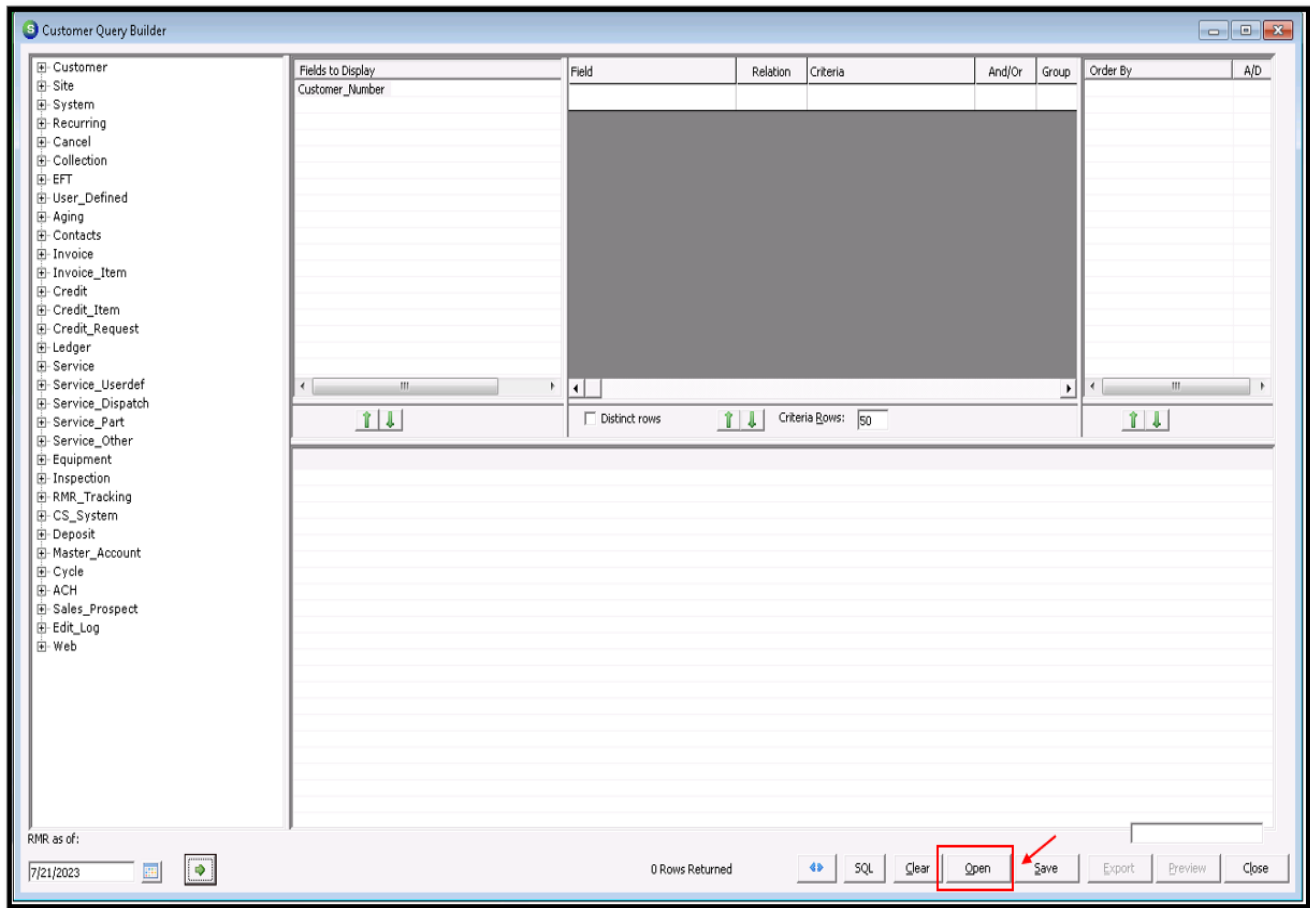
## Query Builder

On the Top Toolbar in Sedona Office select “Query”

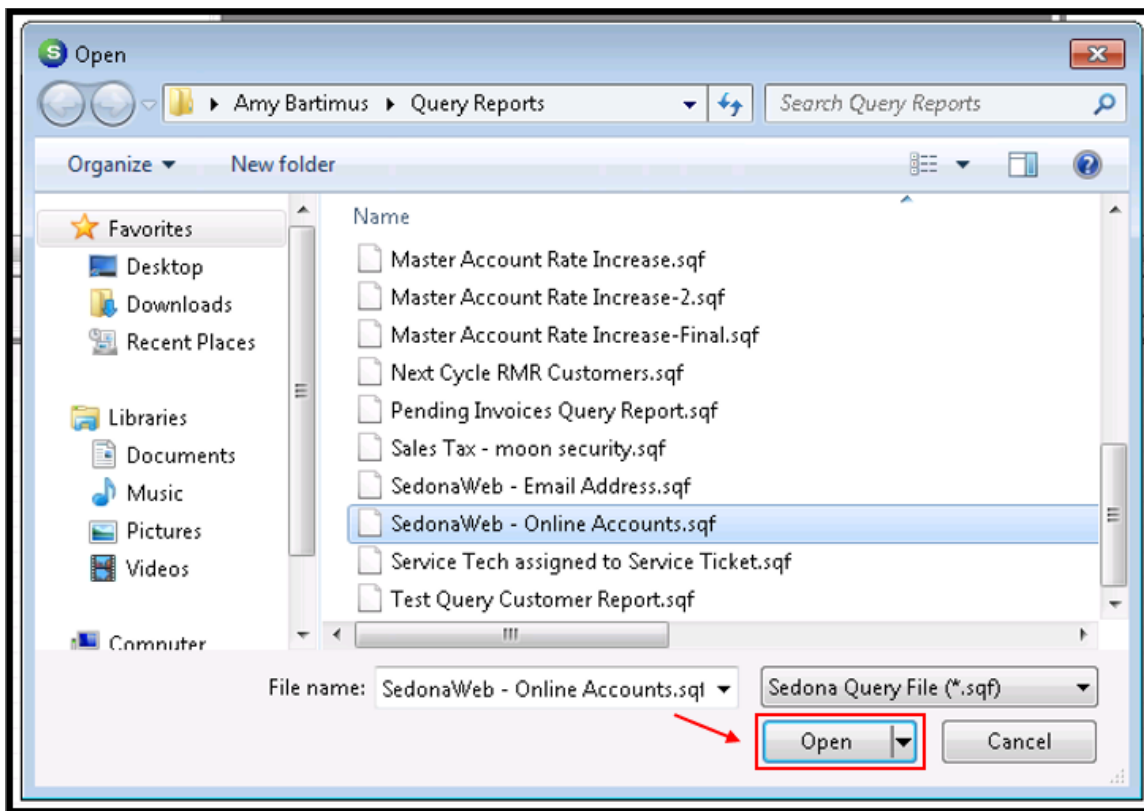
Select the appropriate Query Module.



Once the Query Builder opens, select “Open.”



Select the Query you need and click “Open”.



The Saved Query will now Open in the Query Builder.

