

AppServer Switching Instructions

Switching to New AppServer

1. Open the Log Viewer and have Application Server enabled with Log Level – Debug (4).
2. Open IIS (Internet Information Services).
3. **Switch to the New AppServer.**
 - a. Right-click on the Application Server in the MSM and select **Stop**.
 - b. Double-click on the ‘Switch to New AppServer’ shortcut just created to ensure the system is running on the new AppServer. (The Application Server in the MSM will show as black once you have run the Switch script.)
 - c. Click on the refresh button on the MSM and make sure that the Application Server now shows red.
 - d. On IIS, click on the Server connection, then click on Restart to restart the IIS service.
 - e. Now, go back to the MSM, right-click on the Application Server, and click on **Start**.
 - f. At this point, watch the Log Viewer to confirm that all of the Stored Procedure updates are committed and the tables are cached.

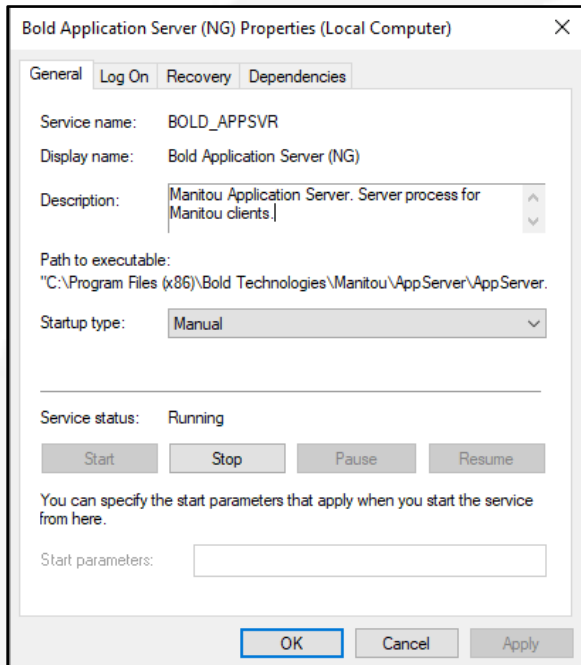
Switching to Old AppServer

4. Open the Log Viewer and have Application Server enabled with Log Level – Debug (4).
5. Open IIS (Internet Information Services).
6. **Switch to the Old AppServer.**
 - g. Right-click on the Application Server in the MSM and select **Stop**.
 - h. Double-click on the ‘Switch to Old AppServer’ shortcut just created to ensure the system is running on the Old AppServer. (The Application Server in the MSM will show as black once you have run the Switch script.)
 - i. Click on the refresh button on the MSM and make sure that the Application Server now shows red.
 - j. On IIS, click on the Server connection, then click on Restart to restart the IIS service.
 - k. Now, go back to the MSM, right-click on the Application Server, and click on **Start**.
 - l. At this point, watch the Log Viewer to confirm that all of the Stored Procedure updates are committed and the tables are cached.

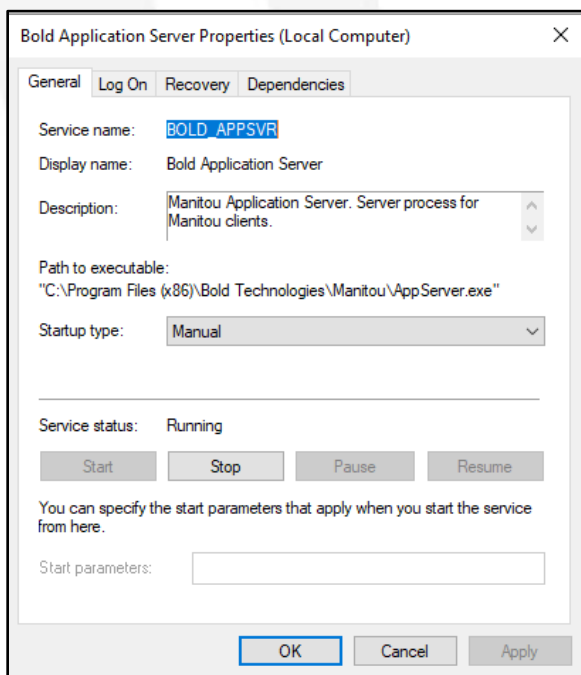
You can check to see which AppServer is running at any time by running the Which AppServer Powershell Script.

You can also look at the Bold Application Server Properties through Windows Services to tell if the Old AppServer or New AppServer is running.

New AppServer (C:\Program Files (x86)\Bold Technologies\Manitou\AppServer\AppServer.exe}



Old AppServer (C:\Program Files (x86)\Bold Technologies\Manitou\AppServer.exe}



If there are any issues at all with switching between Old/New AppServer, perform a failover to your other server.

Report any issues to Manitou Support via email or ticket submission into the Support Portal with full description, steps being taken when issue occurred, screenshots, and the log from Logger.